

《免鍵式軸環》

免鍵式軸環的介紹 Introduction for Power Locker

一、什麼是免鍵式軸環？

What is Power Locker ?

免鍵式軸環是利用錐形結構做機械式縮合，以取代傳統鍵槽與鍵接合的結構。其優點有容易安裝、拆卸簡單節省工時、不需要鍵槽加工，高同心度（可自動校心）無背隙、回轉精度…等等。

Power Locker is designed for mechanical fastening with a conical structure, and supersedes the conventional structure with a key and a keyway. Its advantages are easy-to-assemble, easy-to-disassemble, time-saving, no key required highly alignment (automatic alignment adjustment), backlash free, rotational precision.....ETC。

二、什麼樣場合適合使用免鍵式軸環？

What can the Power Locker be applicable of ?

以現代機械朝精密度發展而言，只要是用鍵與鍵槽的連接場合均適用，尤其以高精密度伺服，傳動系統更為需要，如工作母機、精密電子、高度自動化、紡織、食品、造紙等機械，幾乎涵蓋所有傳動系統，均可使用。

As the precision of mechanism have increased continuously in the present day, the Power Locker is applicable on condition that the connection with a key and a keyway, in particular, for highly precise servo transmission system, like workstation, precise electronic application, high automation, textile machine, food machine, papermaking machine, its application nearly covers all transmission systems.

三、有什麼使用上的注意事項？

The notes for using Power Locker ?

1. 所需傳動扭力的確認

The required transmissible torque

2. 軸與孔的加工精度要求

The requirement of machining precision on shaft and bore.

3. 同心度的要求

The requirement of alignment.

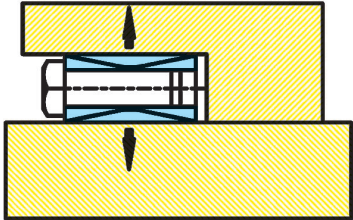
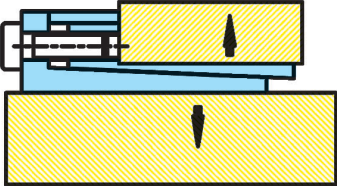
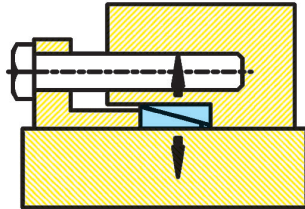
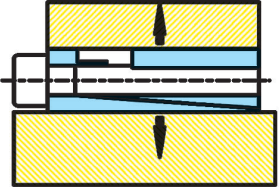
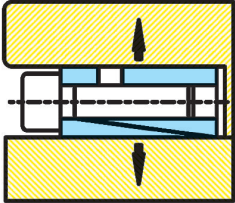
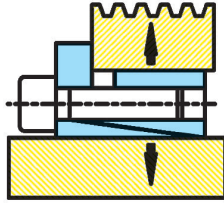
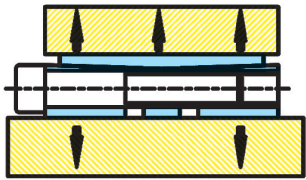
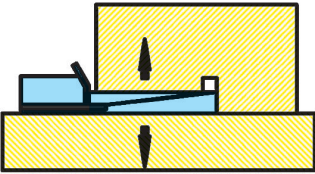
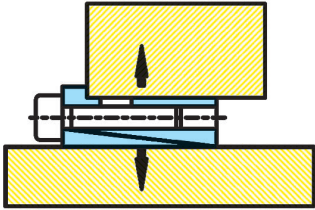
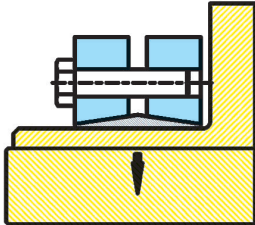

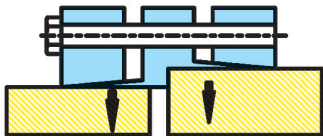
4. 是否有防銹的需求

The requirement of rust resistance.

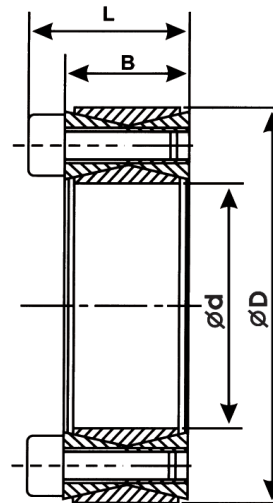
以上為一般注意事項，若有特別需求，請與製造者聯絡

The above are general requirements, if any special requirement, please contact with the manufacturer.

免鍵式軸環安裝範例 Shafting for Power Locker

 <p>SA</p>	 <p>SB</p>	 <p>SC</p>
 <p>SD</p>	 <p>SDS</p>	 <p>SES</p>
 <p>SF</p>	 <p>SI</p>	 <p>SMA</p>
 <p>SSD</p>	 <p>SM</p>	 <p>SMC</p>

SA 非自動校心型 / None self-centering



SA-

內徑 / Inside Diameter

規格 No.	d mm	D mm	B mm	L mm	M mm	TS Nm	T Nm	F KN	P N/mm ²	重量 Weight Kg
SA-18	18	47	20	26	M6	14	250	27	90	0.24
SA-19	19	47	20	26	M6	14	260	27	90	0.23
SA-20	20	47	20	26	M6	14	270	27	90	0.23
SA-22	22	47	20	26	M6	14	300	27	90	0.22
SA-24	24	50	20	26	M6	14	360	30	95	0.24
SA-25	25	50	20	26	M6	14	380	30	95	0.24
SA-28	28	55	20	26	M6	14	470	34	100	0.28
SA-30	30	55	20	26	M6	14	500	34	100	0.27
SA-32	32	60	20	26	M6	14	650	41	110	0.32
SA-35	35	60	20	26	M6	14	700	41	110	0.30
SA-38	38	65	20	26	M6	14	880	45	110	0.35
SA-40	40	65	20	26	M6	14	950	47	110	0.33
SA-42	42	75	24	32	M8	35	1600	75	130	0.58
SA-45	45	75	24	32	M8	35	1700	75	130	0.55
SA-48	48	80	24	32	M8	35	1800	75	120	0.62
SA-50	50	80	24	32	M8	35	1900	75	120	0.59
SA-55	55	85	24	32	M8	35	2300	85	130	0.64
SA-60	60	90	24	32	M8	35	2500	85	120	0.68
SA-65	65	95	24	32	M8	35	3000	95	130	0.73
SA-70	70	110	28	38	M10	69	4800	130	130	1.30
SA-75	75	115	28	38	M10	69	5000	130	130	1.35
SA-80	80	120	28	38	M10	69	5300	130	130	1.42
SA-85	85	125	28	38	M10	69	6400	150	140	1.50
SA-90	90	130	28	38	M10	69	6500	160	140	1.56
SA-95	95	135	28	38	M10	69	8000	170	140	1.63
SA-100	100	145	33	45	M12	120	9700	190	140	2.23
SA-110	110	155	33	45	M12	120	10600	200	130	2.37
SA-120	120	165	33	45	M12	120	13000	210	130	2.60
SA-130	130	180	38	50	M12	120	18000	270	120	3.60
SA-140	140	190	38	50	M12	120	21000	300	120	3.75
SA-150	150	200	38	50	M12	120	24000	320	120	4.10
SA-160	160	210	38	50	M12	120	28000	350	130	4.30
SA-170	170	225	44	58	M14	190	33000	380	120	5.70
SA-180	180	235	44	58	M14	190	38000	420	120	6.00
SA-190	190	250	52	66	M14	190	46000	480	110	8.20
SA-200	200	260	52	66	M14	190	53000	530	120	8.50
SA-220	220	285	56	72	M16	295	68000	620	120	11.22
SA-240	240	305	56	72	M16	295	86000	710	130	12.20
SA-260	260	325	56	72	M16	295	105000	810	135	13.50

M：公制螺絲 / Metric Screw

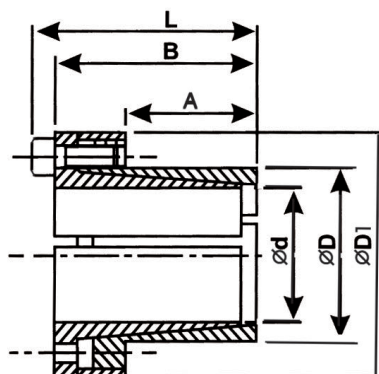
TS：螺絲旋緊扭矩 / Drive Torque of Screw

T：在TS下之傳達扭矩 / Transmissible Torque

P：輪轂面壓力 / Contact Pressure on Hub Surface

F：軸向推力 / Thrust Force

SB 自動校心型 / Self-centering

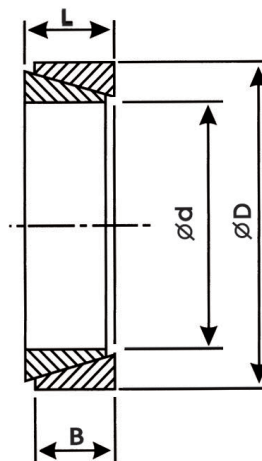


SB-

內徑 / Inside Diameter

規格 No.	d mm	D mm	D1 mm	A mm	B mm	L mm	M mm	TS Nm	T Nm	F KN	P N/mm ²	重量 Weight Kg
SB-06	6	14	25	9	21	24	M3	2	14	4.8	86	0.08
SB-08	8	15	27	12	25	29	M4	5	29	10	205	0.10
SB-09	9	16	28	14	26	30	M4	5	44	10	185	0.12
SB-10	10	16	28	14	26	30	M4	5	49	10	185	0.12
SB-11	11	18	32	14	26	30	M4	5	53	10	185	0.14
SB-12	12	18	32	14	26	30	M4	5	58	10	160	0.14
SB-13	13	23	38	14	26	30	M4	5	63	10	140	0.14
SB-14	14	23	38	14	26	30	M4	5	68	10	130	0.15
SB-15	15	24	45	16	36	42	M6	17	127	17	185	0.26
SB-16	16	24	45	16	36	42	M6	17	136	17	175	0.25
SB-17	17	26	47	18	38	44	M6	17	180	22	190	0.27
SB-18	18	26	47	18	38	44	M6	17	200	22	160	0.27
SB-19	19	27	49	18	38	44	M6	17	220	22	160	0.30
SB-20	20	28	49	18	38	44	M6	17	220	22	170	0.30
SB-22	22	32	54	25	45	51	M6	17	250	22	120	0.38
SB-24	24	34	56	25	45	51	M6	17	270	22	120	0.40
SB-25	25	34	56	25	45	51	M6	17	280	22	120	0.39
SB-28	28	39	61	25	45	51	M6	17	500	35	150	0.47
SB-30	30	41	62	25	45	51	M6	17	530	35	150	0.48
SB-32	32	43	65	30	50	56	M6	17	750	45	150	0.52
SB-35	35	47	69	30	50	56	M6	17	850	48	140	0.63
SB-38	38	50	72	30	50	56	M6	17	930	48	140	0.67
SB-40	40	53	75	30	50	56	M6	17	980	48	130	0.74
SB-42	42	55	78	40	65	73	M8	41	1000	48	130	0.78
SB-45	45	59	85	40	65	73	M8	41	1900	84	130	1.23
SB-48	48	62	87	45	70	78	M8	41	2000	84	140	1.24
SB-50	50	65	92	45	70	78	M8	41	2700	110	130	1.40
SB-55	55	71	98	50	75	83	M8	41	3000	110	130	1.70
SB-60	60	77	104	50	75	83	M8	41	3300	110	130	1.90
SB-65	65	84	111	50	75	83	M8	41	3600	110	130	2.20
SB-70	70	90	119	60	91	101	M10	83	6200	180	130	3.05
SB-75	75	95	126	60	91	101	M10	83	6600	180	130	3.32
SB-80	80	100	131	65	96	106	M10	83	8700	220	130	3.50
SB-85	85	106	137	65	96	106	M10	83	9200	220	130	3.81
SB-90	90	112	143	65	96	106	M10	83	12000	240	130	4.20
SB-95	95	120	153	65	96	106	M10	83	12000	240	130	4.75
SB-100	100	125	162	65	102	114	M12	145	15000	280	130	4.88

SC 非自動對心型 / None self-centering

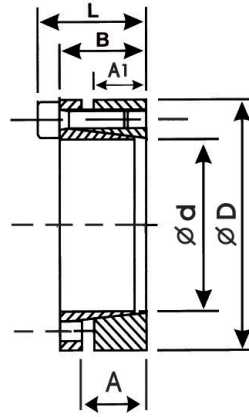


SC-

內徑 / Inside Diameter

規格 No.	d mm	D mm	L mm	B mm	N				T Nm	F KN	P N/mm ²	重量 Weight g
					1	2	3	4				
SC-06	6	9	4.5	3.7	2.5	2.5	3	4	2	0.8	115	1.1
SC-08	8	11	4.5	3.7	2.5	2.5	3	4	5	1.2	120	1.5
SC-10	10	13	4.5	3.7	2.5	2.5	3	4	10	2	120	1.9
SC-11	11	14	4.5	3.7	2.5	2.5	3	4	10	2	120	2.0
SC-12	12	15	4.5	3.7	2.5	2.5	3	4	11	2	115	2.2
SC-13	13	16	4.5	3.7	2.5	2.5	3	4	13	2	110	2.3
SC-14	14	18	6.3	5.3	3	4	4	5	22	3	90	4.9
SC-15	15	19	6.3	5.3	3	4	4	5	25	3	90	5.3
SC-16	16	20	6.3	5.3	3	4	4	5	27	3	90	5.5
SC-17	17	21	6.3	5.3	3	4	4	5	30	3	90	6.0
SC-18	18	22	6.3	5.3	3	4	4	5	32	3	90	6.2
SC-19	19	24	6.3	5.3	3	4	4	5	40	4	90	8.0
SC-20	20	25	6.3	5.3	3	4	4	5	44	4	90	8.2
SC-22	22	26	6.3	5.3	3	4	4	5	58	4	90	8.0
SC-24	24	28	6.3	5.3	3	4	4	5	68	6	100	8.0
SC-25	25	30	6.3	5.3	3	4	4	5	75	6	100	10.0
SC-28	28	32	6.3	5.3	3	4	4	5	90	6	100	9.2
SC-30	30	35	6.3	5.3	3	4	4	5	100	7	100	12
SC-32	32	36	6.3	5.3	3	4	4	5	120	7	100	10
SC-35	35	40	7	6	3	4	4	5	160	9	100	17
SC-36	36	42	7	6	3	4	4	5	169	11	100	19
SC-38	38	44	7	6	4	5	5	6	230	10	100	20
SC-40	40	45	8	6.6	4	5	5	6	230	11	100	23
SC-42	42	48	8	6.6	4	5	5	6	260	12	100	28
SC-45	45	52	10	8.6	4	5	5	6	390	17	100	42
SC-48	48	55	10	8.6	4	5	5	6	430	18	100	45
SC-50	50	57	10	8.6	4	5	5	6	470	19	110	46
SC-55	55	62	10	10.4	4	5	5	6	580	21	110	50
SC-56	56	64	12	10.4	4	5	6	7	790	25	110	67
SC-60	60	68	12	10.4	4	5	6	7	840	28	110	70
SC-65	65	73	12	10.4	4	5	6	7	1000	30	100	77
SC-70	70	79	14	12.2	4	5	6	7	1300	38	100	102
SC-71	71	80	14	12.2	4	5	6	7	1400	39	100	114
SC-75	75	84	14	12.2	4	5	6	7	1500	41	100	110
SC-80	80	91	17	15	5	6	7	8	2100	54	100	175
SC-90	90	101	17	15	5	6	7	8	2700	61	100	210
SC-100	100	114	21	18.7	5	6	8	9	4200	84	100	360
SC-110	110	124	21	18.7	5	6	8	9	5150	93.6	120	380
SC-120	120	134	21	18.7	5	6	8	9	6050	101	120	420
SC-130	130	148	28	25.3	5	6	8	9	9600	148	120	800
SC-140	140	158	28	25.3	6	7	9	11	11000	159	120	860
SC-150	150	168	28	25.3	6	7	9	11	12900	172	120	920
SC-160	160	178	28	25.3	6	7	9	11	14600	183	120	960
SC-170	170	191	33	30	7	9	11	13	19500	229	120	1450
SC-180	180	201	33	30	7	9	11	13	21300	236	120	1500
SC-190	190	211	33	30	7	9	11	13	24200	255	120	1600
SC-200	200	224	38	30	7	9	11	13	31000	310	120	2200

SDS 自動校心型 / Self-centering

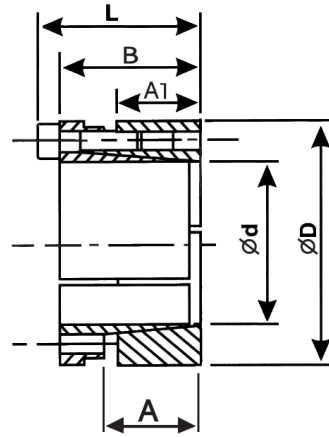


SDS-

內徑 / Inside Diameter

規格 No.	d mm	D mm	A mm	A1 mm	B mm	L mm	M mm	T _s Nm	T Nm	F KN	P N/mm ²	重量 Weight Kg
SDS-06	6	19	10.5	8	13.5	16.5	M3	2.3	6.2	4	53	0.02
SDS-08	8	22	13	10	17	21	M3	3.9	18	4.7	70	0.03
SDS-09	9	23	13	10	17	21	M3	3.9	21	4.7	68	0.04
SDS-10	10	24	13	10	17	21	M3	3.9	30	6.2	87	0.06
SDS-11	11	25	13	10	17	21	M3	3.9	34	6.2	84	0.06
SDS-12	12	26	13	10	17	21	M3	3.9	47	7.8	100	0.07
SDS-13	13	27	13	10	17	21	M3	3.9	50	7.8	97	0.08
SDS-14	14	31	16	12.5	21	26	M4	8	70	10	87	0.08
SDS-15	15	32	16	12.5	21	26	M4	8	75	10	84	0.08
SDS-16	16	33	16	12.5	21	26	M4	8	80	10	81	0.08
SDS-17	17	34	16	12.5	21	26	M4	8	105	12.5	99	0.09
SDS-18	18	35	16	12.5	21	26	M4	8	110	12.5	96	0.10
SDS-19	19	47	22	17	28	34	M6	14	290	30	100	0.26
SDS-20	20	47	22	17	28	34	M6	14	320	32	100	0.25
SDS-22	22	47	22	17	28	34	M6	14	320	32	100	0.25
SDS-24	24	50	22	17	28	34	M6	14	360	32	100	0.27
SDS-25	25	50	22	17	28	34	M6	14	420	34	100	0.27
SDS-28	28	55	22	17	28	34	M6	14	500	34	100	0.32
SDS-30	30	55	22	17	28	34	M6	14	520	34	100	0.35
SDS-32	32	60	22	17	28	34	M6	14	770	48	110	0.37
SDS-35	35	60	22	17	28	34	M6	14	840	48	110	0.34
SDS-38	38	65	22	17	28	34	M6	14	910	48	110	0.40
SDS-40	40	65	22	17	28	34	M6	14	960	48	110	0.38
SDS-42	42	75	25	20	33	41	M8	35	1000	65	110	0.65
SDS-45	45	75	25	20	33	41	M8	35	1500	65	110	0.63
SDS-48	48	80	25	20	33	41	M8	35	2000	85	140	0.70
SDS-50	50	80	25	20	33	41	M8	35	2100	85	140	0.68
SDS-55	55	85	25	20	33	41	M8	35	2500	95	140	0.73
SDS-60	60	90	25	20	33	41	M8	35	2700	90	130	0.78
SDS-65	65	95	25	20	33	41	M8	35	3200	100	140	0.83
SDS-70	70	110	30	24	40	50	M10	70	4900	140	140	1.33
SDS-75	75	115	30	24	40	50	M10	70	5300	140	130	1.40
SDS-80	80	120	30	24	40	50	M10	70	5600	140	130	1.48
SDS-85	85	125	30	24	40	50	M10	70	6700	160	130	1.55
SDS-90	90	130	30	24	40	50	M10	70	7100	160	130	1.63
SDS-95	95	135	30	24	40	50	M10	70	9100	195	135	1.70
SDS-100	100	145	32	26	44	56	M12	125	10200	200	150	2.60
SDS-110	110	155	32	26	44	56	M12	125	10600	200	150	2.80
SDS-120	120	165	32	26	44	56	M12	125	13000	216	140	3.00
SDS-130	130	180	40	34	54	64	M12	125	18900	290	135	4.60
SDS-140	140	190	40	34	54	68	M14	190	20500	333	125	4.90
SDS-150	150	200	40	34	54	68	M14	190	25000	362	120	5.20
SDS-160	160	210	40	34	54	68	M14	190	29000	362	130	5.50
SDS-170	170	225	50	44	64	78	M14	190	34000	400	135	7.75
SDS-180	180	235	50	44	64	78	M14	190	36000	400	120	8.15
SDS-190	190	250	50	44	64	78	M14	190	47500	500	115	9.50
SDS-200	200	265	50	44	64	78	M14	190	50000	500	140	9.90

SD 自動校心型 / Self-centering

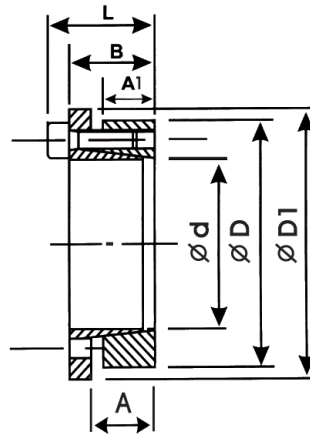


SD-

內徑 / Inside Diameter

規格 No.	d mm	D mm	A mm	A1 mm	B mm	L mm	M mm	TS Nm	T Nm	F KN	P N/mm ²	重量 Weight Kg
SD-20	20	47	31	26	42	48	M6	17	550	55	100	0.37
SD-22	22	47	31	26	42	48	M6	17	600	55	100	0.37
SD-24	24	50	31	26	42	48	M6	17	660	55	100	0.40
SD-25	25	50	31	26	42	48	M6	17	680	55	100	0.40
SD-28	28	55	31	26	42	48	M6	17	720	55	100	0.44
SD-30	30	55	31	26	42	48	M6	17	820	55	100	0.53
SD-32	32	60	31	26	42	48	M6	17	1400	80	130	0.52
SD-35	35	60	31	26	42	48	M6	17	1400	80	130	0.50
SD-38	38	65	31	26	42	48	M6	17	1600	80	130	0.60
SD-40	40	65	31	26	42	48	M6	17	1600	110	130	0.58
SD-42	42	75	36	30	50	58	M8	41	2500	110	130	1.00
SD-45	45	75	36	30	50	58	M8	41	2500	150	130	0.97
SD-48	48	80	36	30	50	58	M8	41	3700	150	170	1.08
SD-50	50	80	36	30	50	58	M8	41	3700	150	170	1.05
SD-55	55	85	36	30	50	58	M8	41	4100	150	160	1.14
SD-60	60	90	36	30	50	58	M8	41	4500	160	160	1.18
SD-65	65	95	36	30	50	58	M8	41	4500	160	150	1.26
SD-70	70	110	46	39	60	70	M10	83	8400	240	150	2.25
SD-75	75	115	46	39	60	70	M10	83	8400	240	140	2.43
SD-80	80	120	46	39	60	70	M10	83	9600	250	140	2.60
SD-85	85	125	46	39	60	70	M10	83	11000	250	150	2.70
SD-90	90	130	46	39	60	70	M10	83	13000	300	150	2.80
SD-95	95	135	46	39	60	70	M10	83	13000	300	150	3.00
SD-100	100	145	52	46	68	80	M12	145	17500	350	150	4.10
SD-110	110	155	52	46	68	80	M12	145	20000	300	150	4.40
SD-120	120	165	52	46	68	80	M12	145	21300	330	150	4.80
SD-130	130	180	52	46	68	80	M12	145	28000	350	150	5.70
SD-140	140	190	58.5	51	76	90	M14	190	30400	350	150	6.20
SD-150	150	200	58.5	51	76	90	M14	190	39000	400	160	7.10
SD-160	160	210	58.5	51	76	90	M14	190	41700	400	170	8.00
SD-170	170	225	58.5	51	76	90	M14	190	52000	460	160	11.00
SD-180	180	235	58.5	51	76	90	M14	190	55000	460	170	12.10

SES 自動校心型 / Self-centering

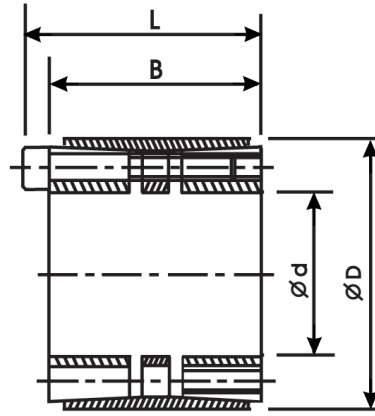


SES-

內徑 / Inside Diameter

規格 No.	d mm	D mm	D1 mm	A mm	A1 mm	B mm	L mm	M mm	Ts Nm	T Nm	F KN	P N/mm ²	重量 Weight Kg
SES-06	6	19	21.5	10.5	8	13.5	16.5	M3	3	6.2	4	53	0.02
SES-08	8	22	25	13	10	17	21	M4	5	18	4.7	70	0.03
SES-09	9	23	26	13	10	17	21	M4	5	21	4.7	68	0.04
SES-10	10	24	27	13	10	17	21	M4	5	30	6.2	87	0.06
SES-11	11	25	28	13	10	17	21	M4	5	34	6.2	84	0.06
SES-12	12	26	29	13	10	17	21	M4	5	47	7.8	100	0.07
SES-13	13	27	30	13	10	17	21	M4	5	50	7.8	97	0.08
SES-14	14	31	34	16	12.5	21	26	M5	11	70	10	87	0.08
SES-15	15	32	35	16	12.5	21	26	M5	11	75	10	84	0.08
SES-16	16	33	36	16	12.5	21	26	M5	11	80	10	81	0.08
SES-17	17	34	37	16	12.5	21	26	M5	11	105	12.5	99	0.09
SES-18	18	35	38	16	12.5	21	26	M5	11	110	12.5	96	0.10
SES-19	19	47	56	22	17	28	34	M6	17	290	30	100	0.26
SES-20	20	47	56	22	17	28	34	M6	17	320	32	100	0.25
SES-22	22	47	56	22	17	28	34	M6	17	320	32	100	0.25
SES-24	24	50	59	22	17	28	34	M6	17	360	32	100	0.27
SES-25	25	50	59	22	17	28	34	M6	17	420	34	100	0.27
SES-28	28	55	64	22	17	28	34	M6	17	500	34	100	0.32
SES-30	30	55	64	22	17	28	34	M6	17	520	34	100	0.35
SES-32	32	60	69	22	17	28	34	M6	17	770	48	110	0.37
SES-35	35	60	69	22	17	28	34	M6	17	840	48	110	0.34
SES-38	38	65	74	22	17	28	34	M6	17	910	48	110	0.40
SES-40	40	65	74	22	17	28	34	M6	17	960	48	110	0.38
SES-42	42	75	84	25	20	33	41	M8	41	1000	65	110	0.65
SES-45	45	75	84	25	20	33	41	M8	41	1500	65	110	0.63
SES-48	48	80	89	25	20	33	41	M8	41	2000	85	140	0.70
SES-50	50	80	89	25	20	33	41	M8	41	2100	85	140	0.68
SES-55	55	85	94	25	20	33	41	M8	41	2500	95	140	0.73
SES-60	60	90	99	25	20	33	41	M8	41	2700	90	130	0.78
SES-65	65	95	104	25	20	33	41	M8	41	3200	100	140	0.83
SES-70	70	110	119	30	24	40	50	M10	83	4900	140	140	1.33
SES-75	75	115	124	30	24	40	50	M10	83	5300	140	130	1.40
SES-80	80	120	129	30	24	40	50	M10	83	5600	140	130	1.48
SES-85	85	125	134	30	24	40	50	M10	83	6700	160	130	1.55
SES-90	90	130	139	30	24	40	50	M10	83	7100	160	130	1.63
SES-95	95	135	144	30	24	40	50	M10	83	9100	195	135	1.70
SES-100	100	145	154	32	26	44	56	M12	145	10200	200	150	2.60
SES-110	110	155	164	32	26	44	56	M12	145	10600	200	150	2.80
SES-120	120	165	174	32	26	44	56	M12	145	13000	216	140	3.00
SES-130	130	180	189	40	34	54	64	M12	145	18900	290	135	4.60
SES-140	140	190	199	40	34	54	68	M14	230	20500	333	125	4.90
SES-150	150	200	209	40	34	54	68	M14	230	25000	362	120	5.20
SES-160	160	210	219	40	34	54	68	M14	230	29000	362	130	5.50
SES-170	170	225	234	50	44	64	78	M14	230	34000	400	135	7.75
SES-180	180	235	244	50	44	64	78	M14	230	36000	400	120	8.15
SES-190	190	250	259	50	44	64	78	M14	230	47500	500	115	9.50
SES-200	200	260	269	50	44	64	78	M14	230	50000	500	140	9.90

SF 高扭力型 / High Torque

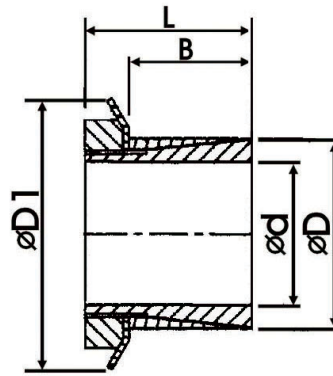


SF-

內徑 / Inside Diameter

規格 No.	d mm	D mm	B mm	L mm	M mm	TS Nm	T Nm	F KN	P N/mm ²	重量 Weight Kg
SF-25	25	50	45	51	M6	17	900	70	90	0.42
SF-28	28	55	45	51	M6	17	940	70	90	0.44
SF-30	30	55	45	51	M6	17	1100	70	90	0.48
SF-32	32	60	45	51	M6	17	1300	70	110	0.47
SF-35	35	60	45	51	M6	17	1600	90	110	0.52
SF-38	38	65	45	51	M6	17	2400	90	110	0.61
SF-40	40	65	45	51	M6	17	2400	120	110	0.60
SF-42	42	75	45	51	M8	41	3300	150	140	0.59
SF-45	45	75	45	51	M8	41	3300	150	140	0.85
SF-48	48	80	64	72	M8	41	4200	160	130	1.30
SF-50	50	80	64	72	M8	41	4200	160	130	1.20
SF-55	55	85	64	72	M8	41	4800	170	120	1.35
SF-60	60	90	64	72	M8	41	6200	200	120	1.40
SF-65	65	95	64	72	M8	41	6900	210	130	1.55
SF-70	70	110	78	88	M10	85	11500	330	130	2.90
SF-75	75	115	78	88	M10	85	12500	330	130	3.10
SF-80	80	120	78	88	M10	85	14500	360	130	3.25
SF-85	85	125	78	88	M10	85	15500	400	130	3.45
SF-90	90	130	78	88	M10	85	18100	400	130	3.60
SF-95	95	135	78	88	M10	85	19500	400	130	3.85
SF-100	100	145	100	112	M12	150	26500	500	130	5.70
SF-110	110	155	100	112	M12	150	31000	600	110	6.30
SF-120	120	165	100	112	M12	150	40000	660	120	7.00
SF-130	130	180	116	130	M14	230	53000	800	130	9.80
SF-140	140	190	116	130	M14	230	64000	900	110	10.40
SF-150	150	200	116	130	M14	230	74000	1000	110	11.10
SF-160	160	210	116	130	M14	230	84000	1050	110	11.50
SF-170	170	225	146	162	M16	230	108000	1300	120	17.80
SF-180	180	235	146	162	M16	230	121000	1300	120	18.40
SF-190	190	250	146	162	M16	230	133000	1400	130	23.00
SF-200	200	260	146	162	M16	230	144000	1400	130	27.00

SI 快速裝卸型 / Easy shafting and disassembling

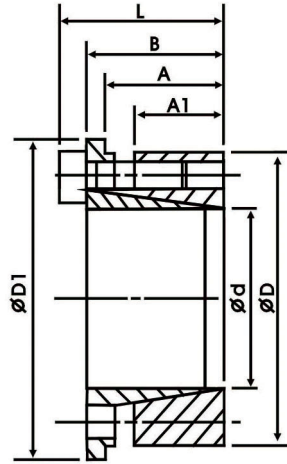


SI-

內徑 / Inside Diameter

規格 No.	d mm	D mm	D1 mm	B mm	L mm	M mm	TS Nm	T Nm	F KN	P N/mm ²	重量 Weight Kg
SI-14	14	25	32	17	29	KM4	95	64	9	45	0.07
SI-15	15	25	32	17	29	KM4	95	70	9	45	0.064
SI-16	16	25	32	17	29	KM4	95	73	9	45	0.06
SI-17	17	25	32	18	31	KM4	95	80	9	45	0.101
SI-18	18	30	38	18	31	KM4	95	83	9	45	0.095
SI-19	19	30	38	18	31	KM5	160	105	11	45	0.09
SI-20	20	30	38	18	31	KM5	160	112	11	45	0.117
SI-22	22	35	45	25	36	KM6	220	163	14	45	0.11
SI-24	24	35	45	25	36	KM6	220	178	14	45	0.1
SI-25	25	35	45	25	36	KM6	220	185	14	45	0.09
SI-28	28	40	52	23	36	KM7	340	250	17	40	0.17
SI-30	30	40	52	23	36	KM7	340	270	17	40	0.22
SI-32	32	45	58	28	42	KM8	480	350	21	45	0.2
SI-35	35	45	58	28	42	KM8	480	390	21	45	0.19
SI-38	38	50	65	28	44	KM9	680	500	26	45	0.31
SI-40	40	50	65	28	44	KM9	680	520	26	50	0.28
SI-42	42	55	70	28	45	KM10	870	630	30	50	0.43
SI-45	45	55	70	28	45	KM10	870	680	30	50	0.38
SI-48	48	60	75	30	46	KM11	970	840	35	50	0.46
SI-50	50	60	75	30	46	KM11	970	880	35	50	0.4
SI-55	55	65	80	30	46	KM12	1100	1030	37	50	0.48
SI-60	60	70	85	30	52	KM13	1300	1360	45	55	0.51

SK 自動校心型 / Self-centering



SK-

內徑 / Inside Diameter

規格 No.	d mm	D mm	D1 mm	A mm	A1 mm	B mm	L mm	M	Ts Nm	T Nm	F KN	P N/mm ²	重量 Weight Kg
SK-08	08	21	23.5	14.5	10	16.5	20.5	M4	4.8	31.4	5.96	80	0.03
SK-10	10	23	25.5	14.5	10	16.5	20.5	M4	4.8	31.4	5.96	80	0.04
SK-11	11	24	26.5	14.5	10	16.5	20.5	M4	4.8	34.3	5.96	77	0.04
SK-12	12	26	28.5	14.5	10	16.5	20.5	M4	4.8	50.3	7.94	95	0.05
SK-14	14	28	30.5	17.5	12	20	24	M4	4.8	73.3	9.90	92	0.06
SK-15	15	29	31.5	17.5	12	20	24	M4	4.8	94.1	11.9	107	0.07
SK-16	16	30	32.5	17.5	12	20	24	M4	4.8	101	11.9	103	0.07
SK-17	17	31	33.5	17.5	12	20	24	M4	4.8	107	11.9	100	0.07
SK-18	18	32	34.5	17.5	12	20	24	M4	4.8	113	11.9	97	0.08
SK-19	19	33	35.5	17.5	12	20	24	M4	4.8	120	11.9	94	0.08

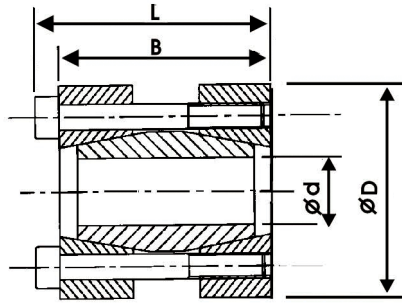
配合軸環之軸徑、孔徑公差表 / Applicable Shaft Size and Bore Size

單位：μm

尺寸 RANGE	φ06-φ10	φ10-φ18	φ18-φ30	φ30-φ50	φ50-φ80	φ80-φ120	φ120-φ180	φ180-φ250	φ250-φ315	軸環配合公差 Fit Tolerance of Lock	
孔徑 Bore Tolerance	H6	+9 +0	+11 +0	+13 +0	+16 +0	+19 +0	+22 +0	+25 +0	+29 +0	+32 +0	
	H7	+15 +0	+18 +0	+21 +0	+25 +0	+30 +0	+35 +0	+40 +0	+46 +0	+52 +0	SCφ10-φ38 SSD
	H8	+22 +0	+27 +0	+33 +0	+39 +0	+46 +0	+54 +0	+63 +0	+72 +0	+81 +0	SA.SB.SD.SDS. SES.SK.SF. SCSCφ40-φ150
軸徑 Shaft Diameter Tolerance	h6	-9 -0	-11 -0	-13 -0	-16 -0	-19 -0	-22 -0	-25 -0	-29 -0	-32 -0	SCφ10-φ38
	h7	-15 -0	-18 -0	-21 -0	-25 -0	-30 -0	-35 -0	-40 -0	-46 -0	-52 -0	SSD
	h8	-22 -0	-27 -0	-33 -0	-39 -0	-46 -0	-54 -0	-63 -0	-72 -0	-81 -0	SA.SB.SD.SDS. SES.SK.SF. SCSCφ40-φ150

★ : SA型2組使用扭力 1.7倍 / 1.7 times torque generated by using two sets of SA type
 SA型3組使用扭力 2.3倍 / 2.3 times torque generated by using three sets of SA type
 SA型4組使用扭力 1.7倍 / 2.9 times torque generated by using four sets of SA type
 SC型2組使用扭力 1.5倍 / 1.5 times torque generated by using two sets of SC type
 SC型2組使用扭力 1.8倍 / 1.8 times torque generated by using three sets of SC type
 SC型2組使用扭力 2.0倍 / 2.0 times torque generated by using two sets of SC type

SM 軸對軸型 / Rigid Coupling

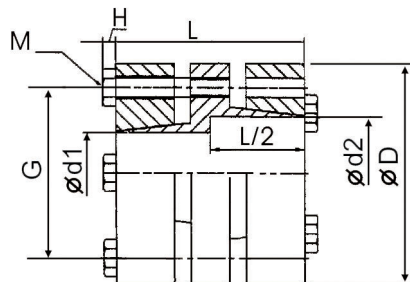


SM-

內徑 / Inside Diameter

規格 No.	d mm	D mm	B mm	L mm	M mm	TS Nm	T Nm	F KN	重量 Weight Kg
SM-15	15	45	50	56	M6	17	150	17	0.41
SM-16	16	45	50	56	M6	17	160	17	0.41
SM-18	18	50	50	56	M6	17	180	17	0.45
SM-19	19	50	50	56	M6	17	190	17	0.48
SM-20	20	50	50	56	M6	17	200	17	0.49
SM-22	22	55	60	66	M6	17	260	26	0.60
SM-24	24	55	60	66	M6	17	360	26	0.60
SM-25	25	55	60	66	M6	17	370	26	0.61
SM-28	28	60	60	66	M6	17	420	26	0.70
SM-30	30	60	60	66	M6	17	450	26	0.70
SM-35	35	75	75	83	M8	41	640	31	1.30
SM-40	40	75	75	83	M8	41	730	31	1.35
SM-45	45	85	85	93	M8	41	1230	47	1.85
SM-50	50	90	85	93	M8	41	1370	47	2.09
SM-60	60	100	85	93	M8	41	2200	64	2.36

SMC 軸對軸型 / Rigid Coupling



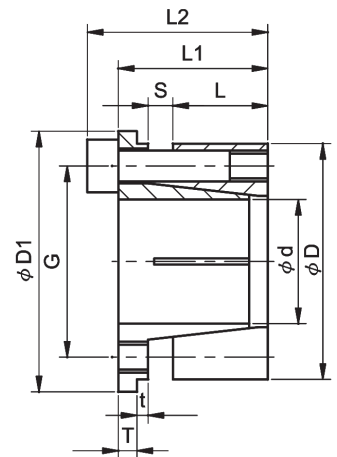
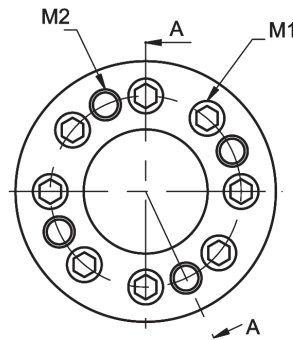
SMC- - -
外徑 / Diameter D1 D2

規格 No.	d1 mm		d2 mm		D mm	G mm	L mm	M mm	H mm	Ts Nm	F Nm	重量 Weight Kg
	mix	max	mix	max								
SMC-54	15	25	15	25	54	42	58	8-M6	4	17	200	0.8
SMC-68	25	35	25	35	68	53	58	8-M6	4	17	260	1.6

SMC is produced after receiving the order

SMC-是接訂單生產外徑

SMA 自動校心型 / Self-centering

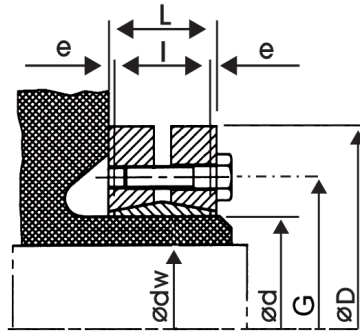


SMA-

內徑 / Inside Diameter

規格 No.	d mm	D mm	D1 mm	G mm	L mm	L1 mm	L2 mm	T mm	t mm	S Nm	M1 mm	M2 mm	T Nm	F KN	P N/mm ²	Ts Nm	慣性矩 J kg.m ²	重量 Weight Kg
SMA-20	20	38	42	30.8	15.3	24.1	29.1	3	1.8	4	8-M5×18	4-M5	21.6	21.6	130	8.8	3.70×10 ⁻⁶	0.144
SMA-22	22	40	44	32.8	15.3	24.1	29.1	3	1.8	4	8-M5×18	4-M5	25.5	22.6	117	8.8	4.42×10 ⁻⁶	0.165
SMA-24	24	42	46	34.8	16.3	25.1	30.1	3	1.8	4	8-M5×18	4-M5	36.3	29.9	111	8.8	5.45×10 ⁻⁶	0.180
SMA-25	25	43	47	35.8	17.3	26.1	31.1	3	1.8	4	8-M5×18	4-M5	39.2	31.4	102	8.8	6.15×10 ⁻⁶	0.188
SMA-28	28	46	50	38.8	17.3	26.6	31.6	3.5	1.8	4	10-M5×18	4-M5	44.1	31.4	119	8.8	8.15×10 ⁻⁶	0.195
SMA-30	30	48	52	40.8	17.3	26.6	31.6	3.5	1.8	4	10-M5×18	4-M5	50.0	33.3	114	8.8	9.45×10 ⁻⁶	0.208
SMA-32	32	50	54	42.8	18.3	27.6	32.6	3.5	1.8	4	10-M5×18	4-M5	53.0	33.3	104	8.8	1.14×10 ⁻⁴	0.219
SMA-35	35	57	62	48.4	19.5	30	36	4	2	4.5	8-M6×20	4-M6	88.3	47.6	114	15.7	2.12×10 ⁻⁴	0.325
SMA-38	38	60	65	51.4	20	30.5	36.5	4	2	4.5	10-M6×20	4-M6	102.0	49.4	132	15.7	2.62×10 ⁻⁴	0.632
SMA-40	40	62	67	53.4	20.5	31	37	4	2	4.5	10-M6×20	4-M6	107.9	50.3	124	15.7	3.00×10 ⁻⁴	0.380
SMA-42	42	64	69	55.4	20.5	31	37	4	2	4.5	10-M6×20	4-M6	115.7	51.5	120	15.7	3.32×10 ⁻⁴	0.405
SMA-45	45	67	72	58.4	21	31.5	37.5	4	2	4.5	10-M6×20	4-M6	128.5	56.9	112	15.7	3.95×10 ⁻⁴	0.435
SMA-48	48	70	75	61.4	21	32	38	4.5	2	4.5	12-M6×20	4-M6	140.2	58.4	129	15.7	4.75×10 ⁻⁴	0.460
SMA-50	50	72	77	63.4	21.5	32.5	38.5	4.5	2	4.5	14-M6×20	4-M6	170.5	68.2	143	15.7	5.35×10 ⁻⁴	0.485
SMA-55	55	77	83	68.4	21.5	32.5	38.5	4.5	2	4.5	14-M6×20	4-M6	188.3	68.5	133	15.7	6.80×10 ⁻⁴	0.520
SMA-60	60	82	87	73.4	22	33.5	39.5	5	2	4.5	15-M6×20	5-M6	210.8	68.7	131	15.7	8.61×10 ⁻⁴	0.560
SMA-65	65	87	92	78.4	22	33.5	39.5	5	2	4.5	15-M6×20	5-M6	223.6	68.7	124	15.7	1.05×10 ⁻³	0.610
SMA-70	70	97	103	86.2	24	36.1	44.1	5	2	5.1	14-M8×25	5-M8	328.5	93.2	169	37.3	1.86×10 ⁻³	0.845
SMA-75	75	102	108	91.2	24	36.1	44.1	5	2	5.1	15-M8×25	5-M8	374.6	99.1	172	37.3	2.22×10 ⁻³	0.932
SMA-80	80	107	113	96.2	25	37.1	45.1	5	2	5.1	15-M8×25	5-M8	412.9	103	158	37.3	2.67×10 ⁻³	1.100
SMA-85	85	112	118	101.2	25	37.1	45.1	5	2	5.1	15-M8×25	5-M8	452.1	106	151	37.3	3.10×10 ⁻³	1.270

SSD 束軸型 / Clamping unit



dw公差

14~30 H6/j6

30~50 H6/h6

50~80 H6/g6

80~200 H7/g6

dw Toleran CE

14~30 H6/j6

30~50 H6/h6

50~80 H6/g6

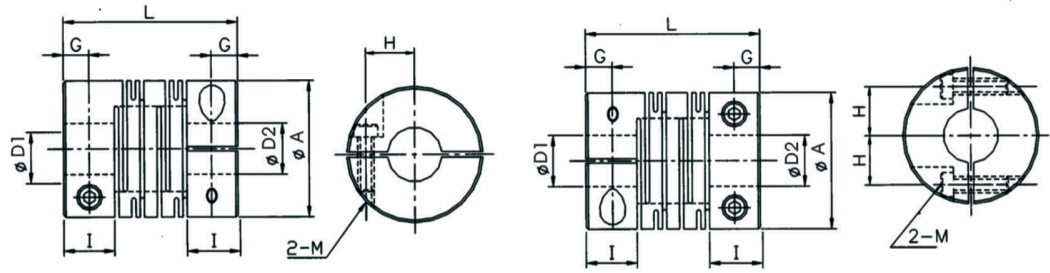
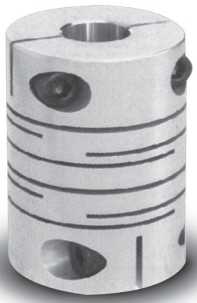
80~200 H7/g6

SSD-

內徑 / Inside Diameter

規格 No.	d mm	dw mm	D mm	l mm	L mm	G mm	e mm	M mm	Ts Nm	T Nm	F KN	P N/mm ²	重量 Kg
SSD-14	14	11 12	38	7	11.0	23	2.00	4×M5	4	30 50	6 9	186	0.10
SSD-16	16	13 14	41	11	15.0	26	2.00	5×M5	4	70 90	10 13	130	0.15
SSD-24	24	19 20 21	50	14	19.5	36	2.75	6×M5	4	170 210 250	25 27 29	286	0.20
SSD-30	30	24 25 26	60	16	21.5	44	2.75	7×M5	4	300 340 380	29 31 33	233	0.30
SSD-36	36	28 30 31	72	18	23.5	52	2.75	5×M6	12	440 570 630	50 58 58	307	0.47
SSD-44	44	32 35 36	80	20	25.5	61	2.75	7×M6	12	620 780 860	64 74 77	317	0.60
SSD-50	50	36 40 42	90	22	27.5	70	2.75	8×M6	12	940 1160 1380	79 86 92	289	0.84
SSD-55	55	42 45 48	100	23	30.5	75	3.75	8×M6	12	1160 1520 1880	79 88 99	252	1.10
SSD-62	62	48 50 52	110	23	30.5	86	3.75	10×M6	12	1850 2200 2400	100 111 117	279	1.30
SSD-68	68	50 55 60	115	23	30.5	86	3.75	10×M6	12	2000 2500 3150	97 106 120	255	1.40
SSD-75	75	55 60 65	138	25	32.5	100	3.75	7×M8	30	2500 3200 3950	119 137 155	273	2.40
SSD-80	80	60 65 70	145	25	32.5	100	3.75	7×M8	30	3200 3900 4600	124 140 158	256	2.60
SSD-85	85	65 70 75	155	30	39.0	114	4.50	10×M8	30	4800 6100 7400	175 195 216	285	3.40
SSD-90	90	65 70 75	155	30	39.0	114	4.50	10×M8	30	4750 6000 7250	170 190 210	271	3.30
SSD-100	100	70 75 80	170	34	44.0	124	5.00	12×M8	30	6900 7500 9000	195 220 240	258	4.40
SSD-110	110	75 80 85	185	39	50.0	136	5.00	9×M10	59	7200 9000 10800	229 252 262	244	5.90
SSD-115	115	80 85 90	188	39	50.0	141	5.50	9×M10	59	7400 9200 11100	235 259 269	234	5.80
SSD-120	120	80 85 90	215	42	54.0	160	5.50	12×M10	59	10600 13300 14500	285 314 340	277	8.60
SSD-125	125	85 90 95	215	42	54.0	160	6.00	12×M10	59	11000 13000 15000	296 324 352	266	8.60
SSD-130	130	90 95 100	215	42	54.0	160	6.00	12×M10	59	11300 13300 15400	304 333 362	255	9.00
SSD-140	140	95 100 105	230	46	60.0	175	7.25	10×M12	100	15100 17600 20100	367 396 425	264	10.0
SSD-155	155	105 110 115	265	50	64.5	192	7.25	12×M12	100	22000 25000 28000	447 478 509	263	16.0

SFC-C/SFCS-C 夾緊式 · 撓性聯軸器 / Set Screw Fix, Flexible Coupling



SFC/SFCS- C- -

外徑 D1 D2

Diameter

◆尺寸表 / Dimension

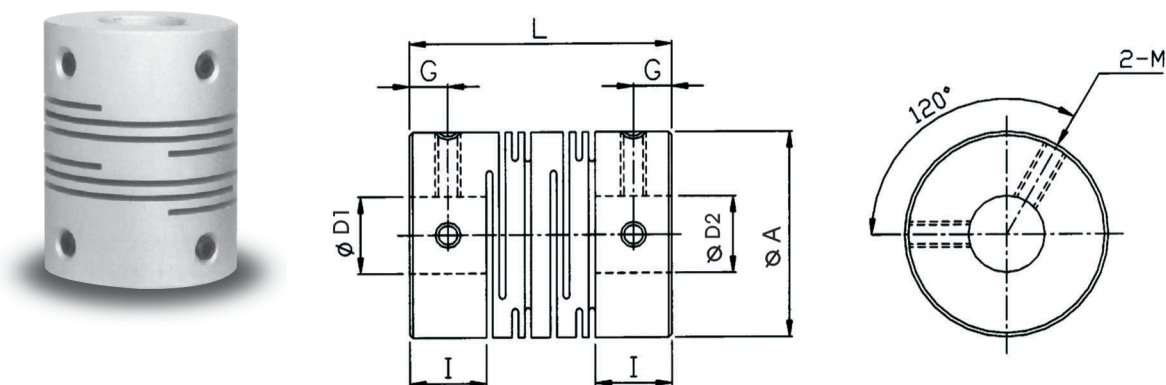
單位/unit:mm

規格 No.	A	I	L	G	H	M	D1×D2/公差		重量 Weight (g)
							min	max	
SFC-16C	16	6.5	23	3.25	5	M2.5	4	6	9.2
SFC-20C	20	7.5	26	3.25	6.5	M3	4	8	16
SFC-25C	25	8.5	31	4.25	9	M4	5	10	28
SFC-32C	32	12	41	6	11	M4	6	14	64
SFC-40C	40	15	56	8.5	14	M5	8	16	140
SFC-50C	50	18	71	10.5	18	M6	12	22	270
SFC-63C	63	22	90	13	24	M8	14	35	530
SFCS-16C	16	6.5	23	3.25	5	M2.5	4	6	25
SFCS-20C	20	7.5	26	3.75	6.5	M3	4	8	43
SFCS-25C	25	8.5	31	4.25	9	M4	6	10	78
SFCS-32C	32	12	41	6	11	M4	8	14	170
SFCS-40C	40	15	56	8.5	14	M5	8	16	370
SFCS-50C	50	18	71	10.5	18	M6	12	22	750
SFCS-63C	63	22	90	13	24	M8	14	35	1400

◆特性表 / Specification

規格 No.	常用扭力 Rated Torque (N.m)	最大扭力 Max. Torque (N.m)	最高轉數 Max. Rotational (rpm)	慣性矩 Moment of Inertia (Kg.m ²)	剛性 靜扭力值 Static Torsional (N.m/rad)	容許偏心 Allowable Eccentricity Error (mm)	容許角度偏差 Allowable Angular Error (°)	容許軸向位移 Allowable Shaft End-Play (mm)
SFC-16C	0.3	0.6	9500	3.4×10 ⁻⁷	47	0.10	2	±0.4
SFC-20C	0.5	1	7600	9.1×10 ⁻⁷	120	0.10	2	±0.4
SFC-25C	1	2	6100	2.6×10 ⁻⁶	170	0.15	2	±0.5
SFC-32C	2	4	4800	9.7×10 ⁻⁶	280	0.15	2	±0.5
SFC-40C	5	10	3800	3.3×10 ⁻⁵	350	0.20	2	±0.5
SFC-50C	10	20	3100	1.0×10 ⁻⁴	590	0.20	2	±0.5
SFC-63C	20	40	2400	3.2×10 ⁻⁴	850	0.20	2	±0.5
SFCS-16C	0.5	1	9500	9.0×10 ⁻⁷	85	0.10	2	±0.3
SFCS-20C	1	2	7600	2.5×10 ⁻⁶	250	0.10	2	±0.3
SFCS-25C	2	4	6100	7.1×10 ⁻⁶	330	0.15	2	±0.4
SFCS-32C	3.5	7	4800	2.7×10 ⁻⁵	850	0.15	2	±0.5
SFCS-40C	8	16	3800	9.0×10 ⁻⁵	1000	0.20	2	±0.5
SFCS-50C	15	30	3100	2.8×10 ⁻⁴	1400	0.20	2	±0.5
SFCS-63C	35	70	2400	8.8×10 ⁻⁴	1800	0.20	2	±0.5

SFC/SFCS 止付螺絲固定式・撓性聯軸器 / Clamping Fix, Flexible Coupling



SFC/SFCS- - -
 外徑 D1 D2
 Diameter

◆尺寸表 / Dimension

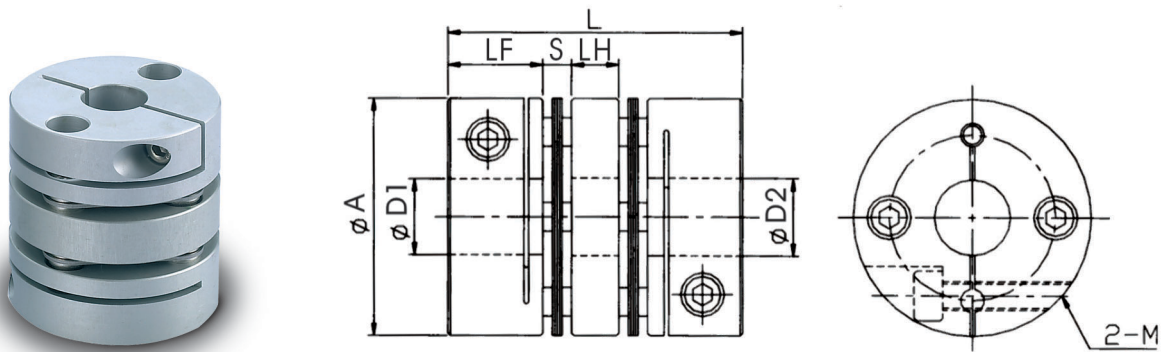
單位/unit:mm

規格 No.	A	I	L	G	M	D1×D2/公差Tolerance(H8)		重量 Weight (g)
						min	max	
SFC-16	16	6.5	23	3	M3	4	8	9.5
SFC-20	20	7.5	26	3	M4	5	10	16
SFC-25	25	8.5	31	4	M4	5	12	30
SFC-32	32	12	41	6	M5	6	14	65
SFC-40	40	15	56	8.5	M5	8	20	120
SFC-50	50	18	71	10.5	M6	12	25	230
SFC-63	63	22	90	13	M8	15	35	470
SFCS-16	16	6.5	23	3	M3	4	8	28
SFCS-20	20	7.5	26	3	M4	5	10	45
SFCS-25	25	8.5	31	4	M4	6	12	95
SFCS-32	32	12	41	6	M5	6	14	220
SFCS-40	40	15	56	8.5	M5	8	20	350
SFCS-50	50	18	71	10.5	M6	12	25	700
SFCS-63	63	22	90	13	M8	15	35	1300

◆特性表 / Specification

規格 No.	常用扭力 Rated Torque (N.m)	最大扭力 Max. Torque (N.m)	最高轉數 Max. Rotational (rpm)	慣性矩 Moment of Inertia (Kg.m ²)	剛性 靜扭力值 Staic Torional (N.m/rad)	容許偏心 Allowable Eccentricity Error (mm)	容許角度偏差 Allowable Angular Error (°)	容許軸向位移 Allowable End-Play (mm)
SFC-16	0.3	0.6	24000	3.3×10 ⁻⁷	47	0.10	2	±0.4
SFC-20	0.5	1	19000	9.0×10 ⁻⁷	120	0.10	2	±0.4
SFC-25	1	2	15000	2.6×10 ⁻⁶	170	0.15	2	±0.5
SFC-32	2	4	12000	9.6×10 ⁻⁶	280	0.15	2	±0.5
SFC-40	5	10	9600	3.2×10 ⁻⁵	350	0.20	2	±0.5
SFC-50	10	20	7700	1.0×10 ⁻⁴	590	0.20	2	±0.5
SFC-63	20	40	6100	3.2×10 ⁻⁴	850	0.20	2	±0.5
SFCS-16	0.5	1	24000	8.4×10 ⁻⁷	85	0.10	2	±0.3
SFCS-20	1	2	19000	2.4×10 ⁻⁶	250	0.10	2	±0.3
SFCS-25	2	4	15000	6.8×10 ⁻⁶	330	0.15	2	±0.4
SFCS-32	3.5	7	12000	2.6×10 ⁻⁵	850	0.15	2	±0.5
SFCS-40	8	16	9600	8.7×10 ⁻⁵	1000	0.20	2	±0.5
SFCS-50	15	30	7700	2.7×10 ⁻⁴	1400	0.20	2	±0.5
SFCS-63	35	70	6100	8.4×10 ⁻⁴	1800	0.20	2	±0.5

SHC-C 鋼片聯軸器 / Plate Flexible Coupling



SHC- C- -

外徑 D1 D2

Diameter

◆尺寸表 / Dimension

單位/unit:mm

規格 No.	A	LF	S	LH	L	M	D1×D2/公差Tolerance(H8)	
							min	max
SHC-27C	27	10.8	2.9	7.5	34.9	M3	5	10
SHC-35C	35	12	3	8	38	M3	6	14
SHC-40C	40	15.5	3.3	10	47.6	M4	8	16
SHC-45C	45	15.5	3.6	10	48.2	M4	10	19
SHC-56C	56	20.5	4	13	62	M5	12	25
SHC-68C	68	24.5	4.2	16	73.4	M6	14	32
SHC-82C	82	29.8	8.8	21.5	98.7	M8	19	35
SHC-94C	94	30	9.4	22	100.8	M8	22	45

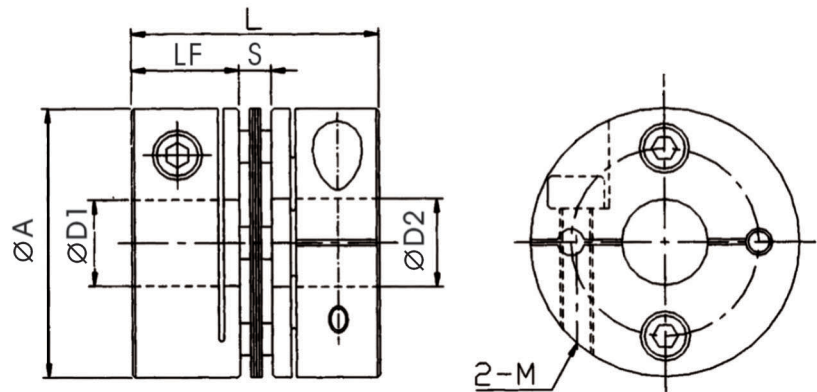
◆特性表 / Specification

規格 No.	常用扭力 Rated Torque (N.m)	最大扭力 Max. Torque (N.m)	容許角度偏差 Allowable Angular Error			最高轉速 Max. Rotational (rpm)	慣性矩 Moment of Inertia (Kg.m ²)	重量 Weight (g)
			偏心 Error of Eccentricity (mm)	偏角 Error of Angularity (o)	軸向位移 Axial End- Play (mm)			
SHC-27C	1.8	3.6	0.15	1	±0.33	10000	3.41×10 ⁻⁶	35.0
SHC-35C	4.0	8.0	0.17	1	±0.40	10000	11.3×10 ⁻⁶	62.0
SHC-40C	6.0	14.0	0.23	1	±0.50	10000	26.3×10 ⁻⁶	116.0
SHC-45C	10.0	20.0	0.23	1	±0.60	10000	41.7×10 ⁻⁶	131.0
SHC-56C	25.0	52.0	0.27	1	±0.80	10000	136.1×10 ⁻⁶	310.0
SHC-68C	60.0	124.0	0.31	1	±0.90	10000	366.9×10 ⁻⁶	365.0
SHC-82C	100.0	200.0	0.52	1	±1.10	10000	1070×10 ⁻⁶	1300.0
SHC-94C	180.0	360.0	0.50	1	±1.3	10000	1750×10 ⁻⁶	1500.0

◆特性 / Features

- 高剛性 / High Rigidity
- 適用於伺服馬達 / Applicable for Servo Motor
- 高扭力 / High Torque
- 緩衝材：不銹鋼彈片 / Buffer Material : Stainless
- 低慣性 / Low Moment of Inertia
- 固定方式：夾緊式 / Fix Type : Clamping
- 零背隙 / Backlash-free

SHS-C 鋼片聯軸器 / Plate Flexible



SHS- C- -

外徑 D1 D2
Diameter

◆尺寸表 / Dimension

單位/unit:mm

規格 No.	A	LF	S	L	M	D1×D2/公差Tolerance(H8)	
						min	max
SHS-27C	27	10.8	2.9	24.5	M3	5	10
SHS-35C	35	12	3	27	M3	6	14
SHS-40C	40	15.5	3.3	34.3	M4	8	16
SHS-45C	45	15.5	3.6	34.6	M4	10	19
SHS-56C	56	20.5	4	45	M5	12	25
SHS-68C	68	24.5	4.2	53.2	M6	14	32
SHS-82C	82	29.8	8.8	68.4	M8	19	35
SHS-94C	94	30	9.4	69.4	M8	22	45

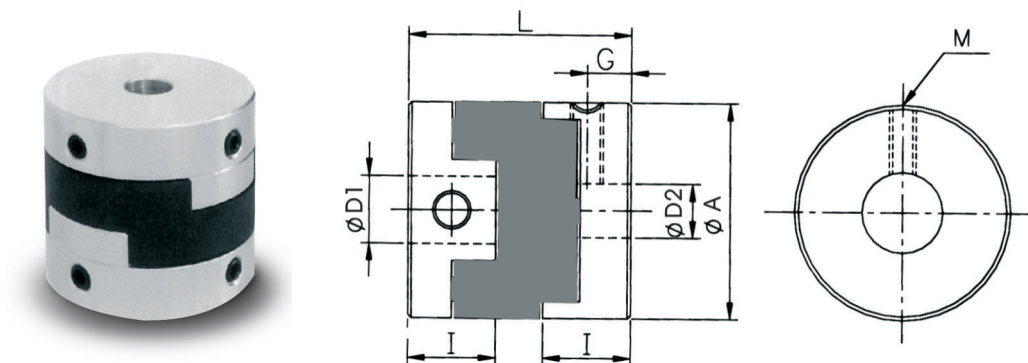
◆特性表 / Specification

規格 No.	常用扭力 Rated Torque (N.m)	最大扭力 Max. Torque (N.m)	容許角度偏差 Allowable Angular Error			最高轉速 Max. Rotational (rpm)	慣性矩 Moment of Inertia (Kg.m ²)	重量 Weight (g)
			偏心 Error of Eccentricity (mm)	偏角 Error of Angularity (°)	軸向位移 Axial End-Play (mm)			
SHS-27C	1.8	3.6	0.02	1	±0.15	10000	2.47×10 ⁻⁶	25.0
SHS-35C	4.0	8.0	0.02	1	±0.20	10000	8.16×10 ⁻⁶	48.0
SHS-40C	6.0	14.0	0.02	1	±0.25	10000	18.5×10 ⁻⁶	90.0
SHS-45C	10.0	20.0	0.02	1	±0.30	10000	29.7×10 ⁻⁶	98.0
SHS-56C	25.0	52.0	0.02	1	±0.40	10000	100.0×10 ⁻⁶	238.0
SHS-68C	60.0	124.0	0.02	1	±0.50	10000	267.7×10 ⁻⁶	470.0
SHS-82C	100.0	200.0	0.02	1	±0.55	10000	736.5×10 ⁻⁶	1050.0
SHS-94C	180.0	360.0	0.02	1	±0.60	10000	1220×10 ⁻⁶	1230.0

◆特性 / Features

- 高剛性 / High Rigidity
- 適用於伺服馬達 / Applicable for Servo Motor
- 高扭力 / High Torque
- 緩衝材：不銹鋼片或彈片 / Buffer Material : Stainless
- 低慣性 / Low Moment of Inertia
- 固定方式：夾緊式 / Fix Type : Clamping
- 零背隙 / Backlash-free

SOL 十字滑動型 · 止付螺絲 / Clamping Oldham



SOL- - -

外徑 D1 D2

Diameter

◆尺寸表 / Dimension

單位/unit:mm

規格 No.	A	I	L	G	M	D1 - D2		重量 Weight (g)
						min	max	
SOL-16	16	7	18	3.5	M3	4	6.35	7
SOL-20	20	9	23	4.5	M4	5	8	14
SOL-25	25	11	28	5.5	M5	5	10	27
SOL-32	32	13	33	6.5	M6	8	14	50
SOL-40	40	14	35	7	M6	10	16	80
SOL-50	50	17	38	8.5	M8	14	20	150
SOL-63	63	21	47	10.5	M10	15	25	300

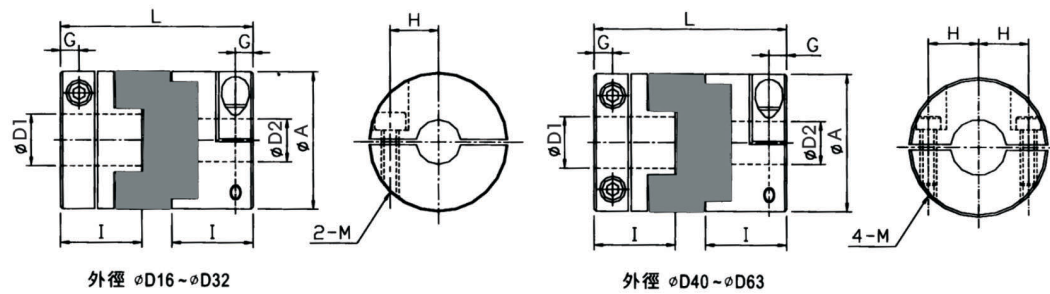
◆特性表 / Specification

規格 No.	常用扭力 Rated Torque (N.m)	最大扭力 Max. Torque (N.m)	最高轉數 Max. Rotational (rpm)	慣性矩 Moment of Inertia (Kg.m ²)	剛性靜扭力值 Static Torsional Stiffness (N.m/rad)	容許偏心 Allowable Eccentricity Error (mm)	容許角度偏差 Allowable Errors (°)
SOL-16	0.7	1.4	3500	3.2×10^{-7}	31	1.0	3
SOL-20	1.2	2.4	7600	1.0×10^{-6}	60	1.5	3
SOL-25	2	4	6100	3.0×10^{-6}	140	2.0	3
SOL-32	4.5	9	4800	9.5×10^{-6}	280	2.5	3
SOL-40	9	18	3800	2.3×10^{-5}	540	3.0	3
SOL-50	18	36	3100	6.7×10^{-5}	820	3.5	3
SOL-63	36	72	2400	2.2×10^{-4}	1900	4.0	3

◆特性 / Features

- 高剛性 / High Rigidity
- 絕緣性佳 / Electrical Insulation
- 組合容易 / Easy Assembly
- 耐油性 / Oil Resistance
- 容許偏心、偏角大 / High Allowable Error of Eccentricity and Angularity Misalignment
- 緩衝材：工程塑膠 / Buffer Material：Engineering Plastic
- 固定方式：止付螺絲 / Fix Type：Clamping
- 使用溫度範圍-30℃~100℃ / Working range, -30℃~100℃ Temperature

SOL-C 十字滑動型・夾緊式 / Clamping Oldham



SOL- C- -

外徑 D1 D2
Diameter

◆尺寸表 / Dimension

單位/unit:mm

規格 No.	A	I	L	G	H	M	D1 - D2		重量 Weight (g)
							min	max	
SOL-16C	16	13	29	3	5	M2.5	5	6.35	12
SOL-20C	20	14	33	3	6.5	M3	6	8	19
SOL-25C	25	17	39	3.8	9	M3	6	10	36
SOL-32C	32	19	45	4.5	11	M4	8	12	69
SOL-40C	40	23	50	7	13	M5	10	16	130
SOL-50C	50	27	58	8	16	M6	16	20	230
SOL-63C	63	33	71	10	21	M8	18	25	450

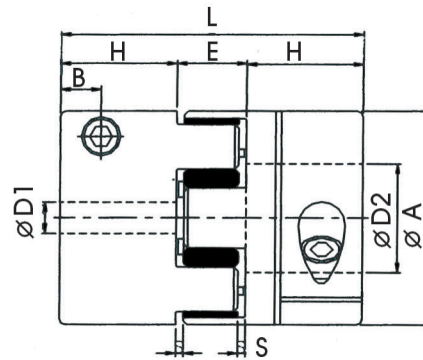
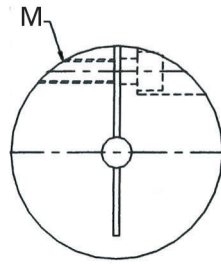
◆特性表 / Specification

規格 No.	常用扭力 Rated Torque (N.m)	最大扭力 Max. Torque (N.m)	最高轉數 Max. Rotational (rpm)	慣性矩 Moment of Inertia (Kg.m ²)	剛性靜扭力值 Static Torsional Stiffness (N.m/rad)	容許偏心 Allowable Eccentricity Error (mm)	容許角度偏差 Allowable Errors (°)
SOL-16C	0.7	1.4	9500	5.8×10^{-7}	31	1.0	3
SOL-20C	1.2	2.4	7600	1.5×10^{-6}	60	1.5	3
SOL-25C	2	4	6100	4.4×10^{-6}	140	2.0	3
SOL-32C	4.5	9	4800	1.4×10^{-5}	280	2.5	3
SOL-40C	9	18	3800	4.1×10^{-5}	540	3.0	3
SOL-50C	18	36	3100	1.2×10^{-5}	820	3.5	3
SOL-63C	36	72	2400	3.7×10^{-4}	1900	4.0	3

◆特性 / Features

- 高剛性 / High Rigidity
- 絕緣性佳 / Electrical Insulation
- 組合容易 / Easy Assembly
- 耐油性 / Oil Resistance
- 容許偏心、偏角大 / High Allowable Error of Eccentricity and Angularity Misalignment
- 緩衝材：工程塑膠 / Buffer Material：Engineering Plastic
- 固定方式：夾緊式 / Fix Type：Clamping
- 使用溫度範圍 -30°C~100°C / Working range, -30°C~100°C Temperature

SQR-C 工程塑膠聯軸器 / Jaw Coupling



SQR- C- D1 - D2

外徑
Diameter

◆尺寸表 / Dimension

單位/unit:mm

規格 No.	A	B	D1		D2		E	H	S	L	M
			min	max	min	max					
SQR-30C	30	5	6	15	6	15	13	11	1.5	35	M4
SQR-40C	40	8.5	8	20	8	20	16	25	2	66	M5
SQR-55C	55	10.5	10	25	10	25	18	30	2	78	M6
SQR-65C	65	13	12	35	12	35	20	35	2.5	90	M8
SQR-80C	80	14	16	45	16	45	24	45	3	114	M10
SQR-95C	95	16	20	55	20	55	26	50	3	126	M10

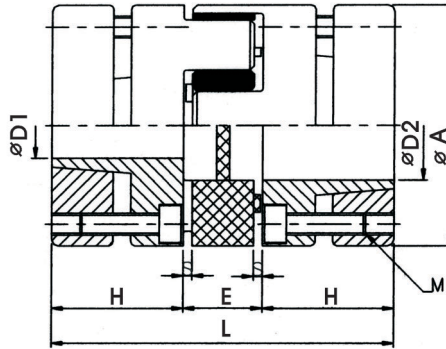
◆特性表 / Specification

規格 No.	常用扭力 Rated Torque (N.m)	最大扭力 Max. Torque (N.m)	容許誤差 Allowable Errors			最高轉速 Max. Rotational (rpm)	剛性靜扭力值 Static Torsion Rigidity (N.m/rad)	慣性矩 Moment of Inertia (Kg.m ²)	重量 Weight (g)
			偏心 Error of Eccentricity (mm)	偏角 Error of Angularity (°)	軸向位移 Axial End-Play (mm)				
SQR-30C	12.5	25	0.1	1	+1.0	10000	135	6.2×10 ⁻⁶	40
SQR-40C	17	34	0.1	1	+1.2	10000	1100	3.9×10 ⁻⁵	150
SQR-55C	60	120	0.1	1	+1.4	7000	3200	1.6×10 ⁻⁴	350
SQR-65C	160	320	0.1	1	+1.5	5900	4900	3.8×10 ⁻⁴	500
SQR-80C	325	650	0.1	1	+1.8	4800	7400	1.1×10 ⁻³	1000
SQR-95C	450	900	0.1	1	+2.0	3600	14000	1.9×10 ⁻³	1500

◆特性 / Features

- 高扭力，高剛性 / High Torque, High Rigidity
- 高正逆轉特性 / High Clockwise and Anticlockwise Rotational Characteristics
- 低慣性，無背隙 / Low Inertia, Backlash-free
- 適用於伺服馬達或精密定位傳動 / Applicable for Servo Motor or Precise Positioning Transmission
- 免保養，壽命長 / Maintenance-free; Infinite Life
- 固定方式：夾緊式 / Fix Type: Clamping
- 本體：鋁合金材質 / Body: Aluminum Alloy Body; Light-weight
- 使用溫度範圍-30℃~100℃ / Working range, -30℃~100℃ Temperature

SQR-P 工程塑膠聯軸器 / Jaw Type Coupling



SQR- P- -

外徑 D1 D2

Diameter

◆尺寸表 / Dimension

單位/unit:mm

規格 No.	A	D1		D2		E	H	S	L	M
		min	max	min	max					
SQR-40P	40	10	19	10	19	16	25	2	66	6-M4
SQR-55P	55	15	25	15	25	18	30	2	78	4-M5
SQR-65P	65	19	35	19	35	20	35	2.5	90	8-M5
SQR-80P	80	20	40	20	40	24	45	3	114	8-M6
SQR-95P	95	28	42	28	42	26	50	3	126	4-M8

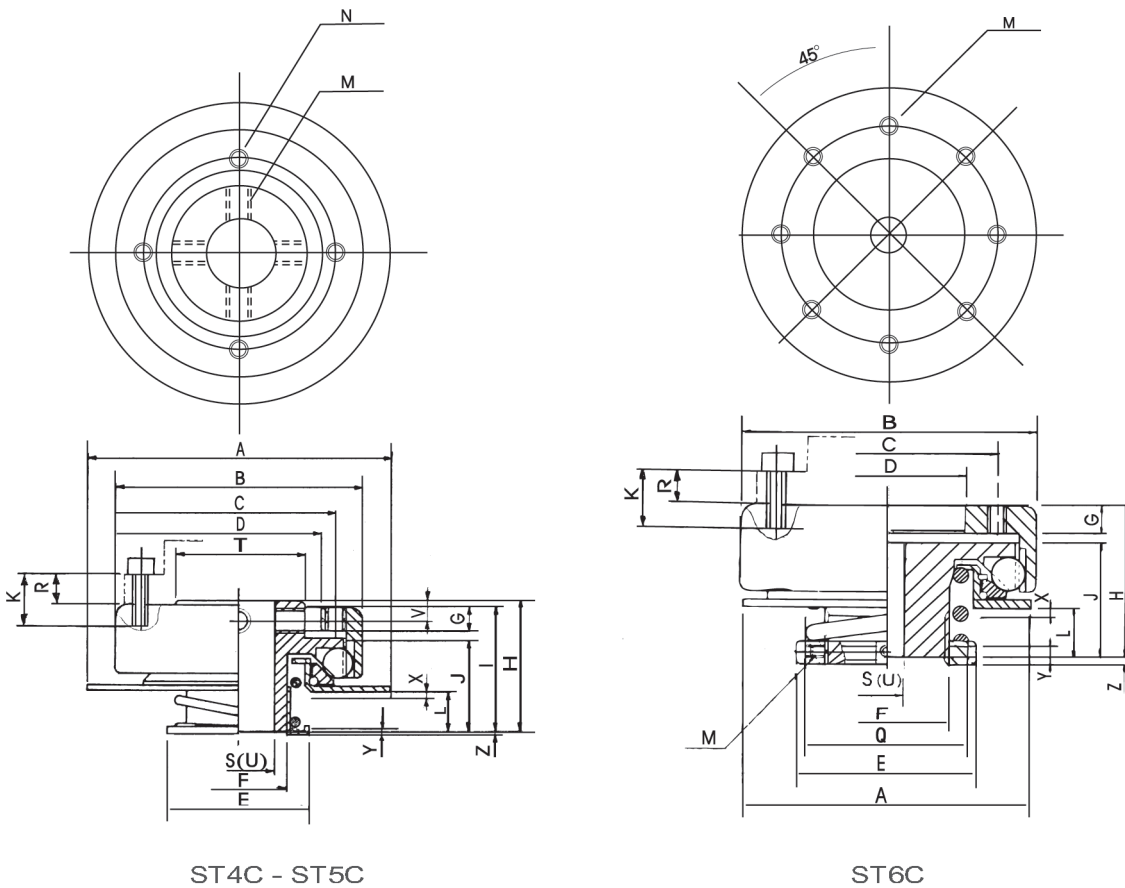
◆特性表 / Specification

規格 No.	常用扭力 Rated Torque (N.m)	常用扭力 Rated Torque (N.m)	容許誤差 Allowable Errors			最高轉速 Max. Rotational (rpm)	剛性靜扭力值 Static Torsion Rigidity (N.m/rad)	慣性矩 Moment of Inertia (Kg.m ²)	重量 Weight (g)
			偏心 Error of Eccentricity (mm)	偏角 Error of Angularity (°)	軸向位移 Axial End- Play (mm)				
SQR-40P	17	34	0.1	1	+1.2	19000	1100	4.0×10^{-5}	150
SQR-55P	60	120	0.1	1	+1.4	14000	3200	1.8×10^{-4}	350
SQR-65P	160	320	0.1	1	+1.5	11500	4900	4.0×10^{-4}	500
SQR-80P	325	650	0.1	1	+1.8	9500	7400	1.12×10^{-3}	1000
SQR-95P	450	900	0.1	1	+2.0	8000	14000	2.0×10^{-3}	1500

◆特性 / Features

- 高扭力 / High Torque
- 高剛性 / High Rigidity
- 抗震佳 / Anti-vibration
- 適用於精密傳動及切削性傳動 / Applicable for the precise and cutting transmission
- 緩衝材：工程塑膠 / Buffer Material : Engineering Plastic
- 固定方式：錐型迫緊 / Fix Type : Conical Clamp
- 使用溫度範圍-30°C~100°C / Working range, -30°C~100°C Temperature

STC 精密定位型扭力限制器 / Accuracy Positioning Type



ST4C - ST5C

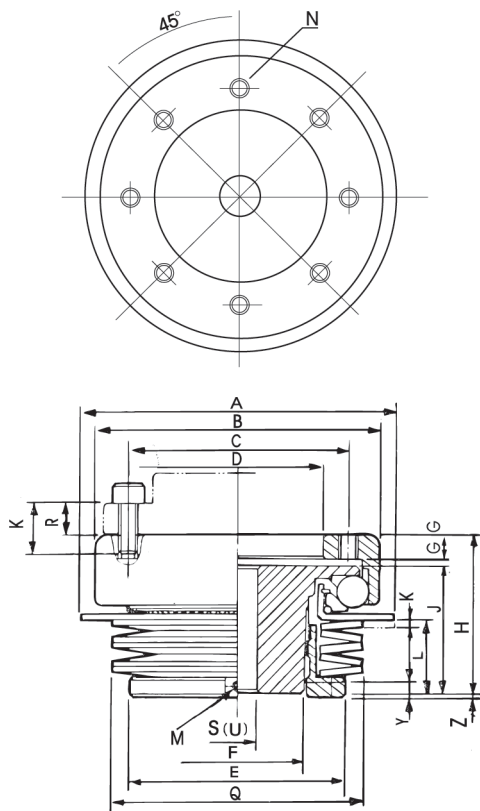
ST6C

◆尺寸 / Dimension

尺寸單位：mm

規格 No.	扭力 T kg.m	A	B	C	D	E	F	G	H	I	J	K	L	M	N	Q	S	U	V	T	X	(Z)
ST4C-007C	0.03~0.07												7.6								0.7	0.6
ST4C-010C	0.04~0.10	64	52	PCD	34	30	M20						8.0	4.M5	4-M4						1.1	0.2
ST4C-030C	0.01~0.30			40	H7		P1	5	28	27	20.5	R+5	7.6	P0.8	深4.7		7	15	4.5	27	0.7	0.6
ST4C-045C	0.15~0.45												8.0								1.1	0.2
ST5C-030C	0.08~0.30												13.1								0.6	0.3
ST5C-060C	0.15~0.60	82	71	PCD	46	44	M30						13.7	4.M6	4-M4						1.2	-0.3
ST5C-100C	0.20~1.00			55	H7		P1.5	7	40	39	30	R+7	13.1	P1	深5.7		9	22	5.5	36	0.6	0.3
ST5C-180C	0.40~1.80												13.7								1.2	-0.3
ST6C-06C	0.2~0.6												18.5								1.4	3.2
ST6C-1C	0.3~1.0	93	95	PCD	50	58	M40						19.0	2.M5	8-M6						2.2	2.8
ST6C-3C	1.0~3.0			70	H7		P1.5	9	52		40	R+8	18.5	P0.8	P1		12.5	27			1.4	3.2
ST6C-5C	1.5~5.0												19.0		深9						2.2	2.8
ST7C-6A	2~6												30.0								1.6	2.0
ST7C-10A	3~10	128	116	PCD	70	88	55	10	65				31.0	2.M5	8-M8						2.4	0.9
ST7C-20B	6~20			90	H7						52	R+9	30.0	P0.8	P1.25	102	16.5	35			1.6	1.7
ST7C-35B	10~35												31.0		深10						2.6	0.6
ST8C-12A	4~12												35.0								1.7	2.5
ST8C-15A	6~12	164	142	PCD	90	108	75	12	75				36.0	2.M5	8-M8						2.7	1.6
ST8C-35B	10~35			110	H7						60	R+11	35.0	P0.8	P1.25	130	16.5	51			1.7	1.8
ST8C-45B	12~45												36.0		深12						2.7	0.9
ST11C-20A	7~20												41.5								2.0	2.4
ST11C-35A	10~35	198	176	PCD	110	134	96	16	90				43.0	2.M5	8-M10						3.2	1.0
ST11C-65B	20~65			130	H7						70	R+15	41.5	P0.8	P1.5	160	16.5	65			2.0	0
ST11C-100B	30~100												43.0		深16						3.2	-1.5
ST14C-30A	10~30												44.0								2.7	4.5
ST14C-45A	15~45	236	208	PCD	130	158	120	16	100				44.0	2.M5	8-M12						4.3	4.5
ST14C-130B	50~130			160	H7						80	R+15	44.0	P0.75	P1.75	186	16.5	90			2.7	3.5
ST14C-200B	80~200												44.0		深16						4.3	3.5
ST18C-160A	70~160												59.0								3.7	4.8
ST18C-250A	100~250	285	285	PCD	170	220	170	18	130				59.0	2.M5	8-M16						6.2	5.0
ST18C-380B	160~380			220	H7						108	R+17	59.0	P0.75	P2	236	50	130			3.7	5.0
ST18C-500B	300~500												59.0		深18						6.2	5.2

STC 精密定位型扭力限制器 / Accuracy Positioning Type



ST7C -ST18C

◆注意事項 / Note

- T : 使用扭力的調整範圍 / Adjustment Range of Applied Torque
 - S : 預鑽孔尺寸 / Bore Size
 - U : 最大加工孔徑尺寸 / Max. Machined Bore Size
 - Kmax : 固定螺絲最大長度(請配合N值使用)
Max. Fixing Screw Length (in compliance with N value)
 - X : 過負荷作用時, 過負荷檢出盤移動距離, 請使用近接開關於迴轉 驅動機構上
Moving Range of Overload Detector in the event of overload. The proximity sensor can be applied to the rotation mechanism.
 - Z : 扭力彈簧自由長時, 驅動輪端面和壓緊螺帽端面的段差尺寸, 使用此尺寸, 算出設定扭力的基準值
The hight between the surface of driving wheel and nut surface when torsion spring is at free length. The gap can be the reference to set torque.
 - M : 固定壓緊螺帽的固定螺絲外徑與節距調整後請務必將固定螺絲鎖好
Fixig nut by the outer diameter and pitch of screw, be sure of locking the fixing screw after adjustment.
 - Tmax : 最大傳達扭力 / Max. Transmissible Torque
 - Ymax : 最大調整量 / Max. Adjustment Range
 - P : 壓緊螺帽的螺紋節距 / Thread pitch for locking nut
 - θ : 偏角誤差的最大吸收量 / Max. Accommodation of Angularity Error
 - α : 隙縫誤差的最大吸收量 / Max. Accommodation of Clearance Error
 - Nmax : 最大容許回轉數 / Allowable Max. Rotational Frequency
 - GD : 扭力限制器的慣性距 / Moment of Inertia of Torque Limiter
- 註(1) / Note 1:
隙縫誤差 α 的值是以組立尺寸H為基準的軸方向移動容許時請務必留意尺寸H
Clearance Error α is based on axial movement of Assembly Size H, be cautious of Assembly Size H
- 註(2) / Note 2:
平行誤差 β 的值是扭力限制器的扭力傳達用滾珠的位置最大吸收量
Parallel Error β is the maximum accommodation of transmissible ball in torque limiter.
- 註(3) / Note 3:
使用回轉數超過Nmax時, 請先敝公司洽談
Please contact with us when the applied rotational frequency is greater than Nmax.

◆特性表 / Specification

規格 No.	Tmax kg.m	Ymax mm	p mm	a kgf	b kgf	c kgf.m	Nmax rpm	GD ² kgf.m ²	W kgf
ST4C-007C	0.07	4.0	1	1	±1.0	0.1	2000	3.6×10 ⁻⁴	0.25
ST4C-010C	0.10	2.7							
ST4C-030C	0.30	4.0							
ST4C-045C	0.45	3.3							
ST5C-030C	0.30	4.2	1.5	1	±1.0	0.1	1600	1.6×10 ⁻⁴	0.68
ST5C-060C	0.60	5.9							
ST5C-100C	1.00	6.8							
ST5C-180C	1.80	7.5							
ST6C-06C	0.6	11.0	1.5	1.5	±1.5	0.1	1000	6.7×10 ⁻³	1.5
ST6C-1C	1	11.0							
ST6C-3C	3	11.0							
ST6C-5C	5	11.0							
ST7C-6A	6	9.0	2	1.2	±1.8	0.1	700	2.3×10 ⁻²	3.2
ST7C-10A	10	8.0							
ST7C-20B	20	9.0							
ST7C-35B	35	7.5							
ST8C-12A	12	11.0	2	1.2	±2	0.1	500	5.5×10 ⁻²	5.3
ST8C-15A	15	10.0							
ST8C-35B	35	10.5							
ST8C-45B	45	9.5							
ST11C-20A	20	13.5	2	1	±2.5	0.1	400	0.14	10.8
ST11C-35A	35	12.0							
ST11C-65B	85	9.0							
ST11C-100B	100	7.5							
ST14C-30A	30	12.0	2	0.7	±3.5	0.1	300	0.37	20
ST14C-45A	45	12.0							
ST14C-130B	130	13.5							
ST14C-200B	200	13.5							
ST18C-160A	160	16.0	3	1	±3.5	0.1	200	1.6	45
ST18C-250A	250	16.0							
ST18C-380B	380	15.0							
ST18C-500B	500	15.0							

● 扭力限制器調整 / Adjusting Torque Limiter

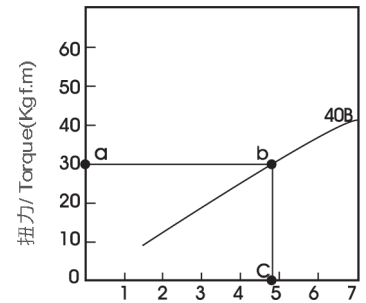
使用扭力是指負荷超過此扭力時，入力側和出力側的傳達被脫離，STF、STC兩種機種具有調整扭力的機能，只要轉動兩機種的鎖緊螺帽就能簡單調整，但是無法表示出調整後的扭力值，所以請參考下圖可以推算出使用扭力，如果需要更正確的數值請使用扭力測定器等測定。Torque limiting disengages power input side and power output side when overload is greater than the applied torque. Both STF and STC provide the feature of torque adjustment by merely tightening or loosening the adjusting bolt on them. As to the applied torque value, please refer to the below charts. If you require the accurate torque value, please use the torque meter to obtain the torque measure.

● 扭力值調整使用例 / Torque Adjustment Guide

使用扭力和扭力彈簧調整量的關係，依據機種逐一表示。例如，需求使用扭力為30Kgfm，選定本公司的扭力限制器ST8F-40B，於圖A求出扭力彈簧的鎖緊螺帽調整量。T=30Kgfm.(點a)將點a水平延伸到ST8F-40B的曲線交點，作為點b。從點b再垂直往下求出點C，得到y=4.9mm(點c)，鎖緊螺帽的螺紋節距從STF型特性表可求出，所以扭力彈簧的鎖緊調整量Y除以螺紋節距P，可以求出鎖緊螺帽的調整迴轉量，換言之螺紋節距P=2mm時，鎖緊螺帽的調整迴轉量是從扭力彈簧變形量為零時位置開始大約轉2.4轉。

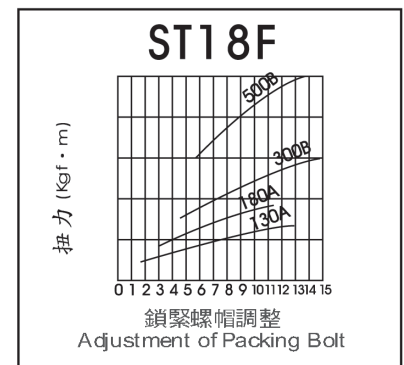
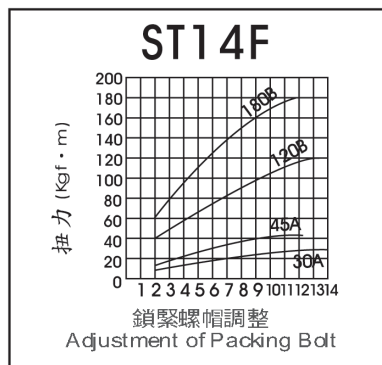
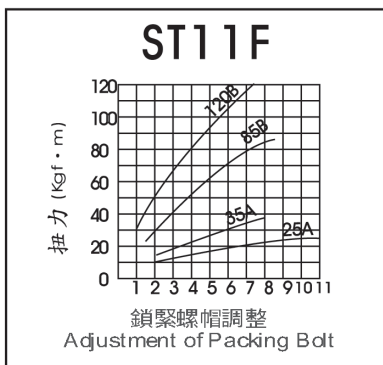
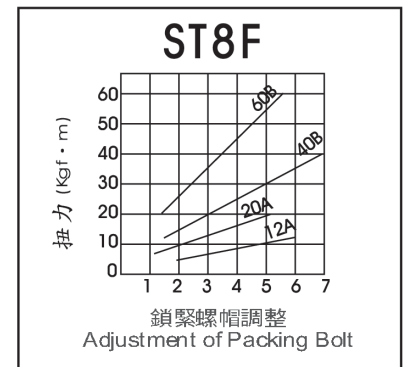
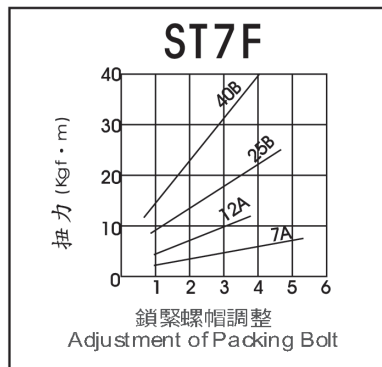
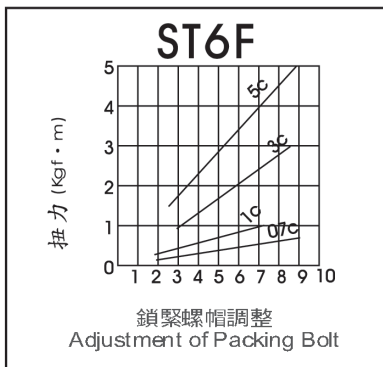
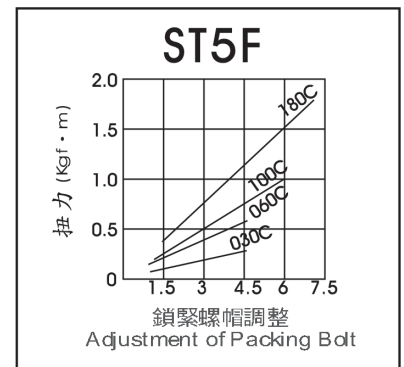
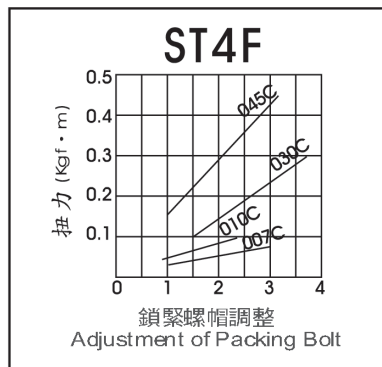
The relation between applied torque and torque spring adjustment of each model is presented respectively below. The required torque is 30 kgf.m, and the selected torque limiter is ST8F-40B. please see figure A, finding out the adjustment of packing bolt of torque spring. Torque = 30kgfm (point a); parallel line from point a intersects with the curve line of ST8F-40B at point b; then vertical line from point b intersects with parallel axis at point c, y=4.9mm (point c), the thread pitch of packing bolt can be derived from the specification of STF type. Thus, Dividing Y, tightening adjustment of torque spring by P, thread pitch can get the rotational adjustment of packing bolt. In other words, if the thread pitch P is equal to 2mm, the rotational adjustment of packing bolt is that rotate the bolt 2.4 screw when the load on torque spring is zero.

ST8F-40B

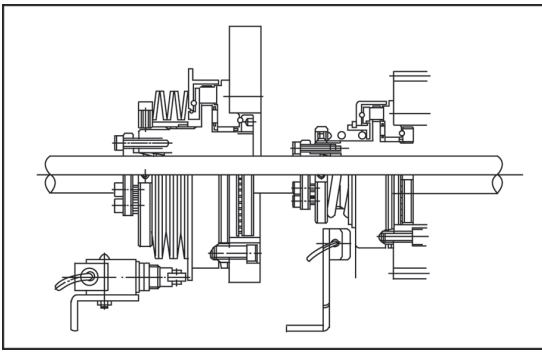


■ STF 型 / STF series

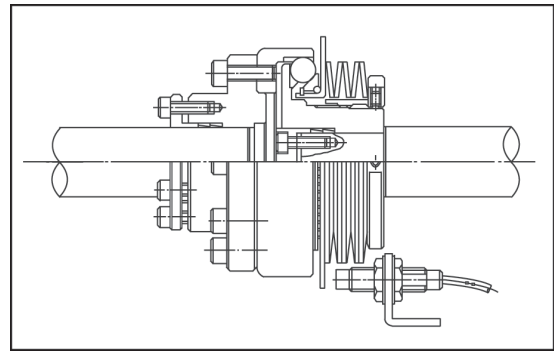
扭力值與鎖緊螺帽調整關係
Guide for Torque and Packing Bolt



扭力限制器應用例 / Application for Torque Limiter



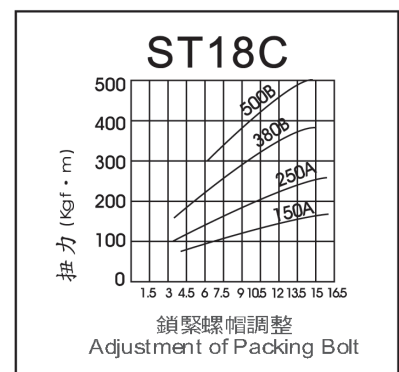
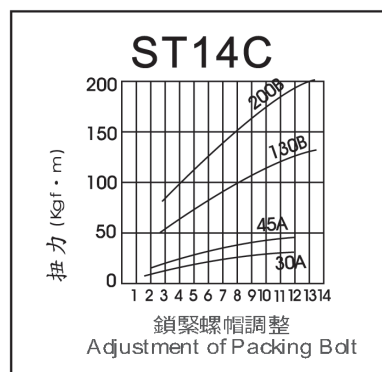
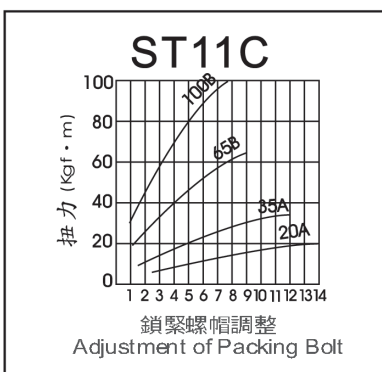
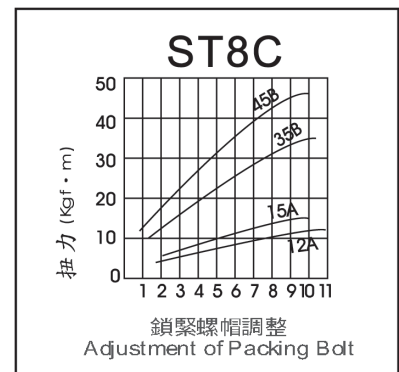
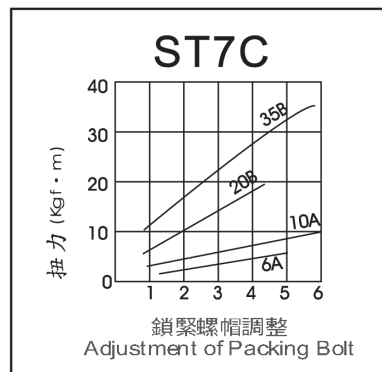
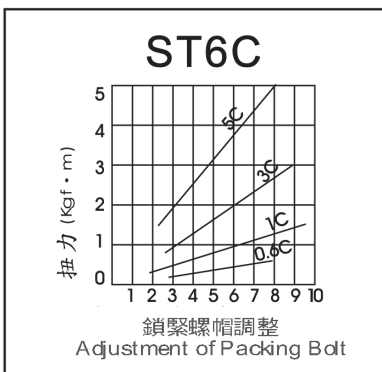
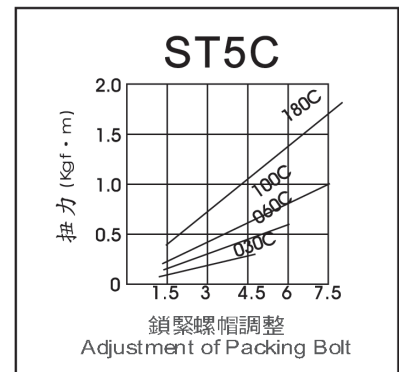
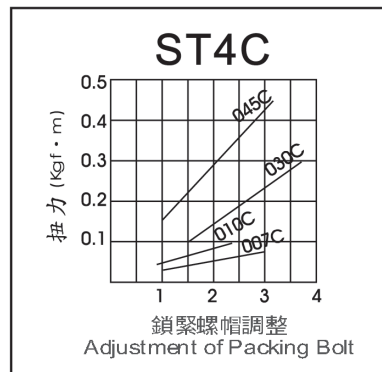
STF 安裝範例
Installation for STF series



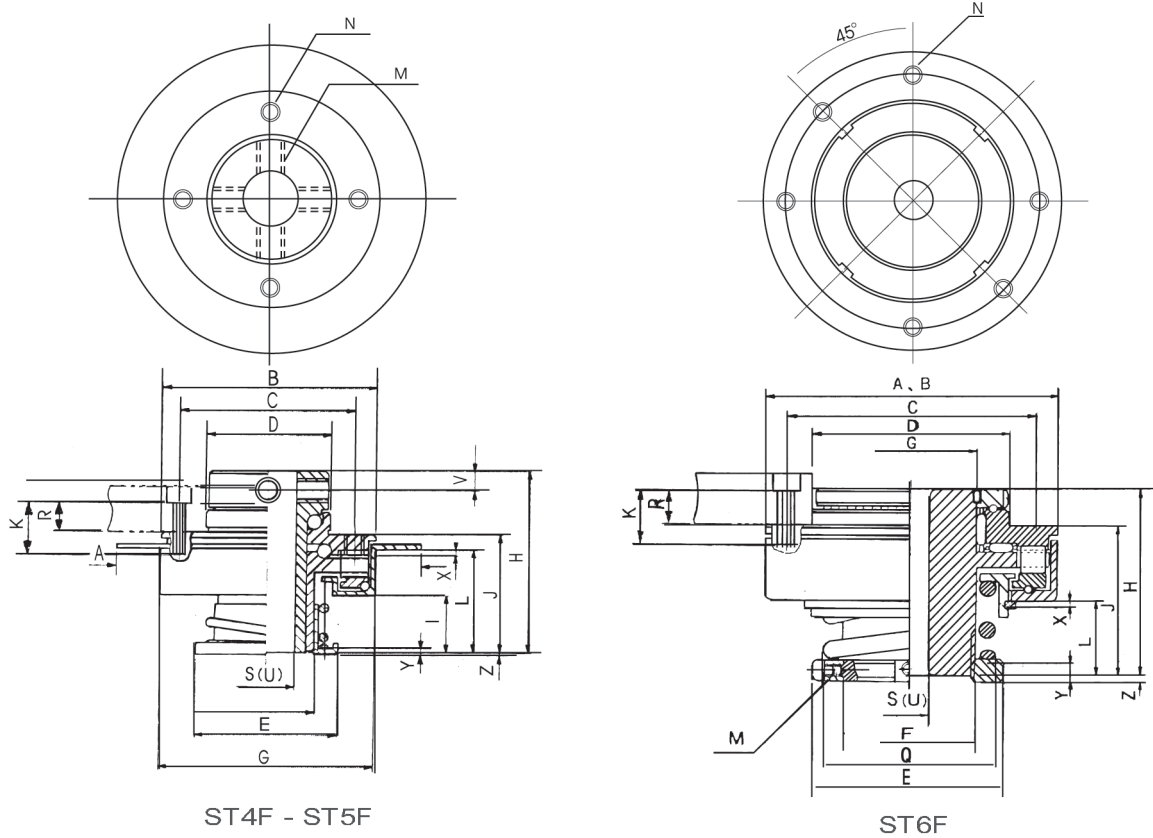
STC 安裝範例
Installation for STC series

STC 型 / STC series

扭力值與鎖緊螺帽調整關係
Guide for Torque and Packing Bolt



STF 精密定位型扭力限制器 / Accuracy Positioning Type



ST4F - ST5F

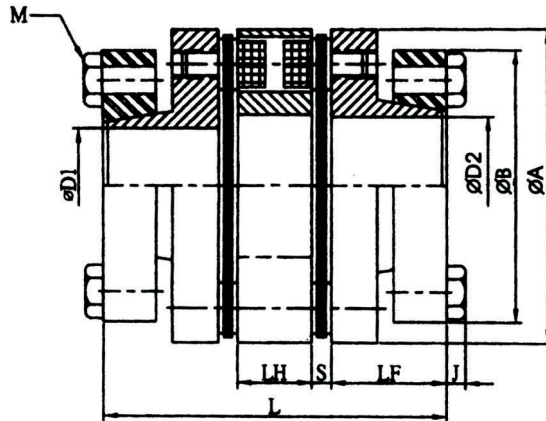
ST6F

◆ 尺寸 / Dimension

尺寸單位：mm

規格 No.	扭力 T kg.m	A	B	C	D	E	F	G	H	I	J	K	L	M	N	Q	S	U	V	X	(Z)
ST4F-007C	0.03~0.07									11.2			21.2							1.1	0.7
ST4F-010C	0.04~0.10	64	64	PCD	26	30	M20	46	38	11.4			21.4	4.M5			7	12	4	1.3	0.5
ST4F-030C	0.01~0.30			36	h7		P1			11.2	25	R+4.5	21.2	P0.8						1.1	0.7
ST4F-045C	0.15~0.45									11.4			21.4		深4.7					1.3	0.5
ST5F-030C	0.08~0.30									17.5			29.0							0.9	1.3
ST5F-060C	0.15~0.60	82	63	PCD	35	44	M30	63	50	18.0			29.5	4.M6	4-M4				1.4	0.8	
ST5F-100C	0.20~1.00			50	h7		P1.5			17.5	34	R+5.5	29.0	P1	P0.7		9	20	6	0.9	1.3
ST5F-180C	0.40~1.80									18.0			29.5		深5.7					1.4	0.8
ST6F-07C	0.2~0.7												25.0		6-M6					1.3	3.9
ST6F-1C	0.3~1.0	88	88	PCD	60	58	M40	M40	60				25.5	2.M5	P1		12.5	27		2.0	3.2
ST6F-3C	1.0~3.0			75	h7		P1.5	P1.5					25.0	P0.8	深7					1.3	3.9
ST6F-5C	1.5~5.0												25.5							2.0	3.2
ST7F-7A	2.2~7												30.0		6-M6					1.6	1.7
ST7F-12A	4~12	128	113	PCD	75	88	M52		70				31.0	2.M5	P1				2.5	0.9	
ST7F-25B	8~25			95	h7		P1.5				55	R+9	30.0	P0.8	深9	102	16.5	35		1.6	1.4
ST7F-40B	12~40												31.0							2.5	0.6
ST8F-12A	5~12												37.5		6-M8					1.6	0
ST8F-20A	7~20	164	138	PCD	100	109	M72		82				38.5	2.M5	P1.25		130	16.5	48	2.5	-0.8
ST8F-40B	12~40			120	h7		P1.5				65	R+11	37.5	P0.8	深11					1.6	-0.7
ST8F-60B	20~60												38.5							2.5	-1.5
ST11F-25A	8~25												42.0		6-M10					2.0	2.0
ST11F-35A	12~35	198	170	PCD	120	134	M90		95				43.0	2.M5	P1.5				3.0	1.0	
ST11F-85B	22~85			148	h7		P1.5				75	R+13	42.0	P0.8	深13	160	16.5	62		2.0	-0.5
ST11F-120B	35~120												43.0							3.0	-1.5
ST14F-30A	11~30												43.5		6-M12					2.6	3.8
ST14F-45A	15~45	236	206	PCD	150	158	M120		105				45.0	2.M5	P1.75		186	30	90	4.0	2.4
ST14F-120B	42~120			180	h7		P2				85	R+15	43.5	P0.75	深15					2.6	2.8
ST14F-180B	60~180												45.0							4.0	1.4
ST18F-130A	40~130												59.0		6-M16					3.3	5.0
ST18F-180A	80~180	280	252	PCD	180	220	M140		135				60.5	2.M5	P2					5.0	3.3
ST18F-300B	150~300			215	h7		P2				110	R+17	59.0	P0.75	深20	236	50	110		3.3	5.2
ST18F-500B	300~500												60.5							5.0	3.5

SWL 高剛性・高扭矩聯軸器 / High Rigid, High Torque



SWL- - -
 外徑 Diameter D1 D2

◆尺寸表 / Dimension

單位/unit:mm

規格 No.	A	B	D1		D2		L	LF	LH	S	J	M	螺絲鎖緊力 Screw Tightening Moment
			min	max	min	max							
SWL-40	40	38	8	16	8	16	49.2	16	10	3.6	2.8	8-M4	3.5Nm
SWL-56	56	48	10	17	10	17	60.9	20	13	3.9	4	8-M5	6Nm
		54	18	25	18	25							
SWL-68	68	54	14	22	14	22	74.5	25	16	4.2	4.2	8-M6	12Nm
		64	24	30	24	30							
SWL-82	82	56	16	22	16	22	85	30	16	4.8	4	8-M6	12Nm
		64	24	30	24	30							
		69	32	35	32	35							
SWL-94	94	58	19	22	19	22	100.8	30	22	9.4	4	8-M6	14Nm
		68	24	30	24	30							
		78	32	40	32	40							
		88	42	48	42	48							
SWL-104	104	68	24	30	24	30	102	30	22	10	4	8-M6	14Nm
		78	32	40	32	40							
		88	42	50	42	50							
		98	55	60	55	60							

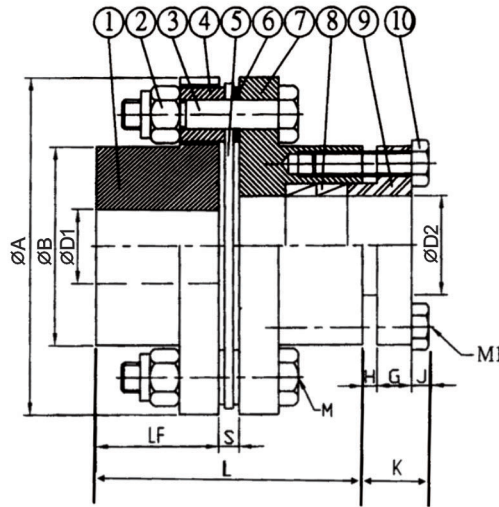
◆特性表 / Specification

規格 No.	常用扭力 Rated Torque (Nm)	最高迴轉數 Max. (rpm)	容許偏心 Allowable Eccentricity Error (mm)	容許角度偏差 Allowable Angular Error (°)	容許軸向位移 Allowable Shaft End-Plaw (mm)	彈簧定數 Spring Constant (N-m/rad)	軸向彈簧定數 Shaft Spring Constant (mm)	慣性矩 Moment of Inertia (Kg.m ²)	重量 Weight (g)
SWL-40	7	10000	0.20	單邊1	±0.5	5000	25	2.8 × 10 ⁻⁵	120
SWL-56	25	10000	0.25	單邊1	±0.8	8000	21.5	14 × 10 ⁻⁵	308
SWL-68	60	10000	0.30	單邊1	±0.9	30000	22.5	38 × 10 ⁻⁵	560
SWL-82	90	10000	0.30	單邊1	±0.9	35000	30	107 × 10 ⁻⁵	855
SWL-94	180	10000	0.50	單邊1	±1.6	70000	60	195 × 10 ⁻⁵	1500
SWL-104	250	10000	0.50	單邊1	±1.6	80000	80	210 × 10 ⁻⁵	1700

◆特性 / Features

- 低慣性無背隙 / Low Inertia, Backlash-free
- 具緩衝抗震功能 / Flexibility and Vibration Resistance
- 錐形固定方式安全可靠 / Secured by Conical Clamping
- 適用於伺服馬達或精密定位傳動 / Applicable for Servo Motor or Precision Positioning Transmission
- 免保養壽命長 / Maintenance-free ; Infinite Life
- 本體鋁合金材質輕量化 / Aluminum Alloy Body ; Light-weight

SWP 高鋼性 · 鋼片聯軸器 / High Rigid, Metal Disk Coupling



零件 Part	名稱 Description	材質 Material Equivalent
1	輪本體 / Body	S45C
2	螺帽 / Nut	S25C
3	螺栓 / Pressure Bolt	SCM435
4	襯套 / Collar	S45C
5	連動元件 / Element	SUS鋼片 SUS Plate Spring
6	墊圈 / Washer	S45C
7	本體 / Body	S45C
8	免鍵軸環 / Keyless Lock	Ready-made Product
9	加壓法蘭 / Pressure Flange	S45C
10	螺栓 / Pressure Bolt	SCM435

SWP- - D1 K - D2 C

外徑 加工型式 加工型式
Outer Diameter Type of Maching Type of Maching

★ K 型加工 - 註明鍵槽尺寸
Type K : Keyway size must be advised
C 型加工 - 加 SC 軸環
Type C : SC Power Locker is added on

◆ 尺寸表 / Dimension

單位/unit:mm

規格 No.	A	B	D1		D2		L	LF	S	H	M	J	G	M1	K	材質 Material Equivalent
			min	max	min	max										
SWP-68	68	40	10	25	14	20	54	25	4.2	2.5	4-M6	5	6	4-M5	13.5	S45C
SWP-82	82	54	12	35	14	30	55	25	4.8	2.8	4-M6	5	7	4-M6	14.8	S45C
SWP-94	94	58	12	38	14	40	69	30	9.4	3.4	4-M8	5	7	4-M6	15.4	S45C
SWP-104	104	68	12	42	20	45	76	33	10	3	4-M8	5	8	4-M8	16	S45C
SWP-126	126	78	25	50	25	50	91	40	11	3	4-M10	7	10	4-M8	20	S45C
SWP-144	144	88	30	55	30	55	102	45	12	3	4-M10	7	10	4-M8	20	S45C

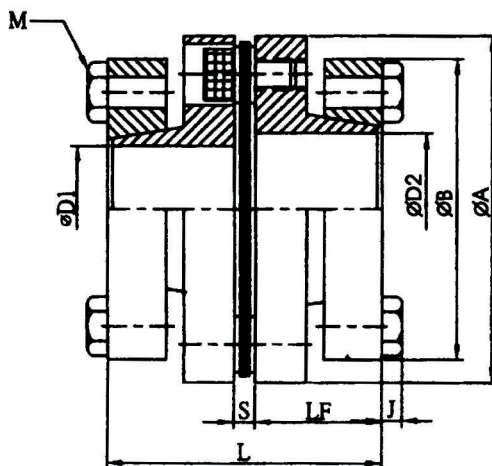
◆ 特性表 / Specification

規格 No.	常用扭力 Rated Torque (N.m)	最高轉數 Max. Rotational (rpm)	彈簧定數 Spring Constant (Kg.m/rad)	軸向彈簧定數 Axial Spring Constant (Kg/mm)	容許軸向誤差 Allowable Axial Error (mm)	慣性矩 Moment of Inertia (Kg.m ²)	最大軸向負荷 Max. Axial Load (Kgf)
SWP-68	60	20000	0.25×10^{-4}	4.6	0.8	3.0	0.8
SWP-82	90	17000	0.82×10^{-4}	6.0	1.0	8.7	2.3
SWP-94	180	15000	1.5×10^{-4}	12.5	1.2	16	4.5
SWP-104	250	13000	2.4×10^{-4}	17	1.4	26	6.0
SWP-126	450	10000	4.2×10^{-4}	22.3	1.6	65	11
SWP-144	800	9000	7.2×10^{-4}	31.3	1.8	99	20

◆ 特性 / Features

- 緩衝材：不銹鋼彈片 / Buffer Material : Stainless
- 固定方式：夾緊式 / Fix Type: Clamping

SW 高剛性・高扭矩聯軸器 / High Rigid, High Torque



SW- - -
 外徑 D1 D2
 Diameter

◆尺寸表 / Dimension

單位/unit:mm

規格 No.	A	B	D1		D2		L	LF	S	J	M	螺絲鎖緊力 Screw Tightening Moment
			min	max	min	max						
SW-40	40	38	8	16	8	16	35.6	16	3.6	2.8	8-M4	3.5Nm
SW-56	56	48	10	17	10	17	43.9	20	3.9	4	8-M5	6Nm
			18	25	18	25						
SW-68	68	54	14	22	14	22	54.2	25	4.2	4.2	8-M6	12Nm
			24	30	24	30						
SW-82	82	56	16	22	16	22	64.8	30	4.8	4	8-M6	12Nm
			24	30	24	30						
			32	35	32	35						
SW-94	94	58	19	22	19	22	69.4	30	9.4	4	8-M6	14Nm
			24	30	24	30						
			32	40	32	40						
			42	48	42	48						
SW-104	104	68	24	30	24	30	70	30	10	4	8-M6	14Nm
			32	40	32	40						
			42	50	42	50						
			55	60	55	60						

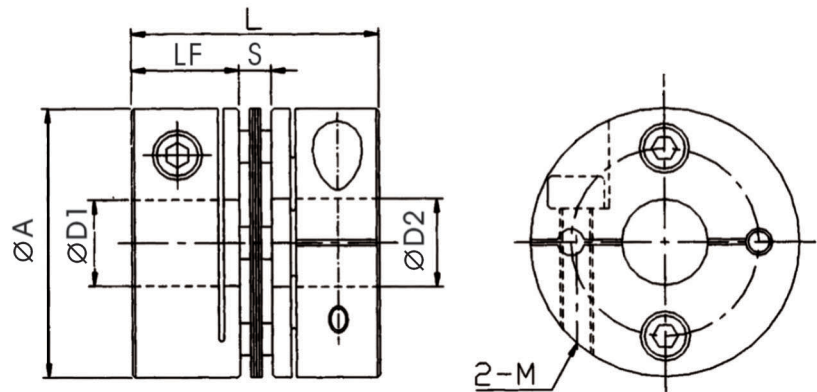
◆特性表 / Specification

規格 No.	常用扭力 Rated Torque (N.m)	最高迴轉數 Max. (rpm)	容許偏心 Allowable Eccentricity Error (mm)	容許角度偏差 Allowable Angular Error (°)	容許軸向位移 Allowable Shaft End-Play (mm)	彈簧定數 Spring Constant (N-m/rad)	軸向彈簧定數 Shaft Spring Constant (mm)	慣性矩 Moment of Inertia (Kg.m ²)	重量 Weight (g)
SW-40	7	10000	0.02	1°	±0.25	10000	50	2.8 × 10 ⁻⁵	90
SW-56	25	10000	0.02	1°	±0.40	16000	43	12 × 10 ⁻⁵	221
SW-68	60	10000	0.02	1°	±0.45	60000	45	28 × 10 ⁻⁵	400
SW-82	90	10000	0.02	1°	±0.45	70000	60	35 × 10 ⁻⁵	616
SW-94	180	10000	0.02	1°	±0.80	140000	120	108 × 10 ⁻⁵	1000
SW-104	250	10000	0.02	1°	±0.80	160000	160	115 × 10 ⁻⁵	1200

◆特性 / Features

- 低慣性無背隙 / Low Inertia, Backlash-free
- 具緩衝抗震功能 / Flexibility and Vibration Resistance
- 錐形固定方式安全可靠 / Secured by Conical Clamping
- 適用於伺服馬達或精密定位傳動 / Applicable for Servo Motor or Precise Positioning Transmission
- 免保養壽命長 / Maintenance-free ; Infinite Life
- 本體鋁合金材質輕量化 / Aluminum Alloy Body ; Light-weight

SHS-C 鋼片聯軸器 / Plate Flexible



SHS- C- -
 外徑 D1 D2
 Diameter

◆尺寸表 / Dimension

單位/unit:mm

規格 No.	A	LF	S	L	M	D1×D2/公差Tolerance(H8)	
						min	max
SHS-27C	27	10.8	2.9	24.5	M3	5	10
SHS-35C	35	12	3	27	M3	6	14
SHS-40C	40	15.5	3.3	34.3	M4	8	16
SHS-45C	45	15.5	3.6	34.6	M4	10	19
SHS-56C	56	20.5	4	45	M5	12	25
SHS-68C	68	24.5	4.2	53.2	M6	14	32
SHS-82C	82	29.8	8.8	68.4	M8	19	35
SHS-94C	94	30	9.4	69.4	M8	22	45

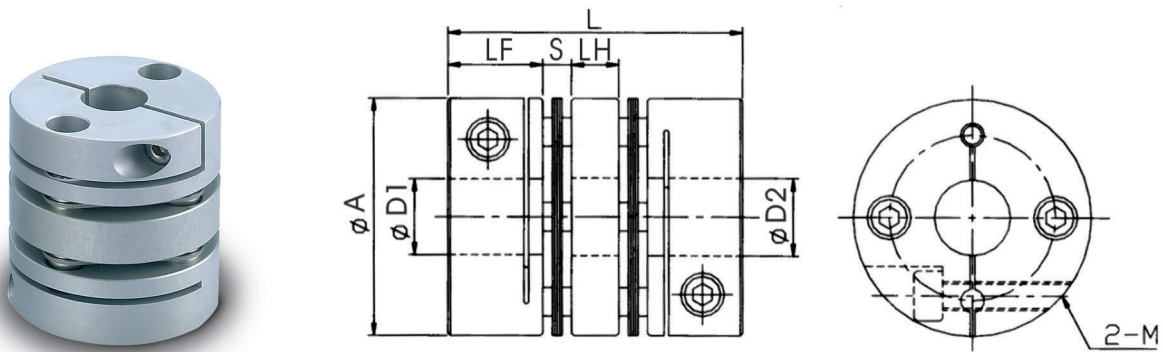
◆特性表 / Specification

規格 No.	常用扭力 Rated Torque (N.m)	最大扭力 Max. Torque (N.m)	容許角度偏差 Allowable Angular Error			最高轉速 Max. Rotational (rpm)	慣性矩 Moment of Inertia (Kg.m ²)	重量 Weight (g)
			偏心 Error of Eccentricity (mm)	偏角 Error of Angularity (°)	軸向位移 Axial End-Play (mm)			
SHS-27C	1.8	3.6	0.02	1	±0.15	10000	2.47×10 ⁻⁶	25.0
SHS-35C	4.0	8.0	0.02	1	±0.20	10000	8.16×10 ⁻⁶	48.0
SHS-40C	6.0	14.0	0.02	1	±0.25	10000	18.5×10 ⁻⁶	90.0
SHS-45C	10.0	20.0	0.02	1	±0.30	10000	29.7×10 ⁻⁶	98.0
SHS-56C	25.0	52.0	0.02	1	±0.40	10000	100.0×10 ⁻⁶	238.0
SHS-68C	60.0	124.0	0.02	1	±0.50	10000	267.7×10 ⁻⁶	470.0
SHS-82C	100.0	200.0	0.02	1	±0.55	10000	736.5×10 ⁻⁶	1050.0
SHS-94C	180.0	360.0	0.02	1	±0.60	10000	1220×10 ⁻⁶	1230.0

◆特性 / Features

- 高剛性 / High Rigidity
- 適用於伺服馬達 / Applicable for Servo Motor
- 高扭力 / High Torque
- 緩衝材：不銹鋼片或彈片 / Buffer Material : Stainless
- 低慣性 / Low Moment of Inertia
- 固定方式：夾緊式 / Fix Type : Clamping
- 零背隙 / Backlash-free

SHC-C 鋼片聯軸器 / Plate Flexible Coupling



SHC- C- -

外徑 D1 D2

Diameter

◆尺寸表 / Dimension

單位/unit:mm

規格 No.	A	LF	S	LH	L	M	D1×D2/公差Tolerance(H8)	
							min	max
SHC-27C	27	10.8	2.9	7.5	34.9	M3	5	10
SHC-35C	35	12	3	8	38	M3	6	14
SHC-40C	40	15.5	3.3	10	47.6	M4	8	16
SHC-45C	45	15.5	3.6	10	48.2	M4	10	19
SHC-56C	56	20.5	4	13	62	M5	12	25
SHC-68C	68	24.5	4.2	16	73.4	M6	14	32
SHC-82C	82	29.8	8.8	21.5	98.7	M8	19	35
SHC-94C	94	30	9.4	22	100.8	M8	22	45

◆特性表 / Specification

規格 No.	常用扭力 Rated Torque (N.m)	最大扭力 Max. Torque (N.m)	容許角度偏差 Allowable Angular Error			最高轉速 Max. Rotational (rpm)	慣性矩 Moment of Inertia (Kg.m ²)	重量 Weight (g)
			偏心 Error of Eccentricity (mm)	偏角 Error of Angularity (o)	軸向位移 Axial End- Play (mm)			
SHC-27C	1.8	3.6	0.15	1	±0.33	10000	3.41×10 ⁻⁶	35.0
SHC-35C	4.0	8.0	0.17	1	±0.40	10000	11.3×10 ⁻⁶	62.0
SHC-40C	6.0	14.0	0.23	1	±0.50	10000	26.3×10 ⁻⁶	116.0
SHC-45C	10.0	20.0	0.23	1	±0.60	10000	41.7×10 ⁻⁶	131.0
SHC-56C	25.0	52.0	0.27	1	±0.80	10000	136.1×10 ⁻⁶	310.0
SHC-68C	60.0	124.0	0.31	1	±0.90	10000	366.9×10 ⁻⁶	365.0
SHC-82C	100.0	200.0	0.52	1	±1.10	10000	1070×10 ⁻⁶	1300.0
SHC-94C	180.0	360.0	0.50	1	±1.3	10000	1750×10 ⁻⁶	1500.0

◆特性 / Features

- 高剛性 / High Rigidity
- 適用於伺服馬達 / Applicable for Servo Motor
- 高扭力 / High Torque
- 緩衝材：不銹鋼彈片 / Buffer Material : Stainless
- 低慣性 / Low Moment of Inertia
- 固定方式：夾緊式 / Fix Type : Clamping
- 零背隙 / Backlash-free

扭力限制器 Torque Limiter

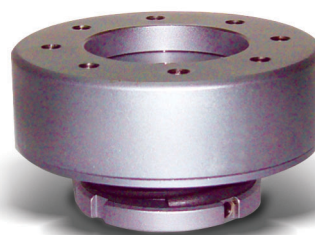
精密定位扭力限制器 / Accuracy Positioning Type



● STF系列 / STF Series

STF 法蘭型系列附有法蘭面，可裝配平台、齒輪、鏈輪使用，此項過負荷保護，針對旋轉垂直方向出力有效，在正常使用下，可精確傳達扭力，且無背隙減少動作上的耗損。

STF Series, the flanged type, can be used to platform, gear and sprocket. It provides overload protection to rotationwise and verticalwise power output. In normal usage, it can precisely transmit torque, and lower the loss of drive without backlash.



● STC系列 / STC Series

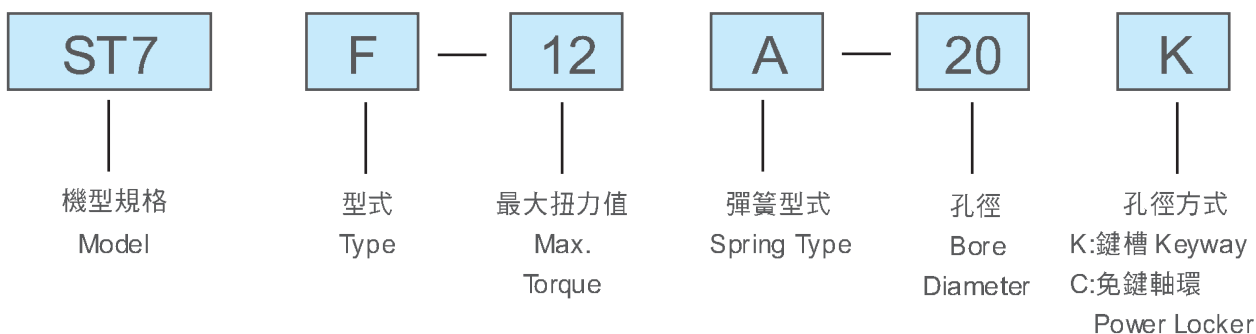
STC聯軸型系列適用於軸與軸聯結，此項過負荷保護，針對旋轉垂直方向出力有效，具備吸收軸與軸之間排列落差特性。

STC Series, the coupling type provides shaft-to-shaft connection, and overload protection to rotationwise and verticalwise power output. It can absorb the shaft-to-shaft misalignment.

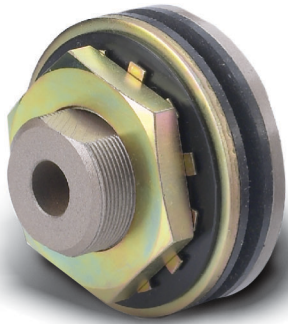
扭力限制器精度 Accuracy of Torque Limiter

	ST4F~ST5F	ST6F~ST18F	ST4C~ST5C	ST6C~ST18C
定位精度 Accuracy of Positioning	1~2mim	30sec	1~2mim	30sec
重現精度 Accuracy of Repeatability	30sec	15sec	30sec	15sec

選用方式 Ordering Specification



摩擦型扭力限制器 Friction Type Torque Limiter



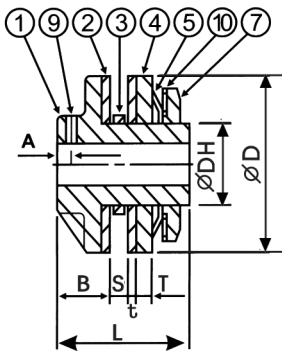
SS350 - 1 C

聯軸器型
Coupling type

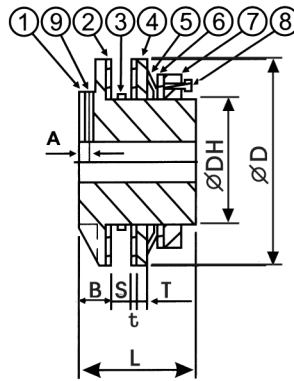
- 1. 單片彈簧 - Single Disc Spring
- 2. 雙片彈簧 - Double Disc Springs.

產品規格
MODEL

扭力限制器



SS200.SS250.SS350



SS500.SS700

部品名稱 / Parts

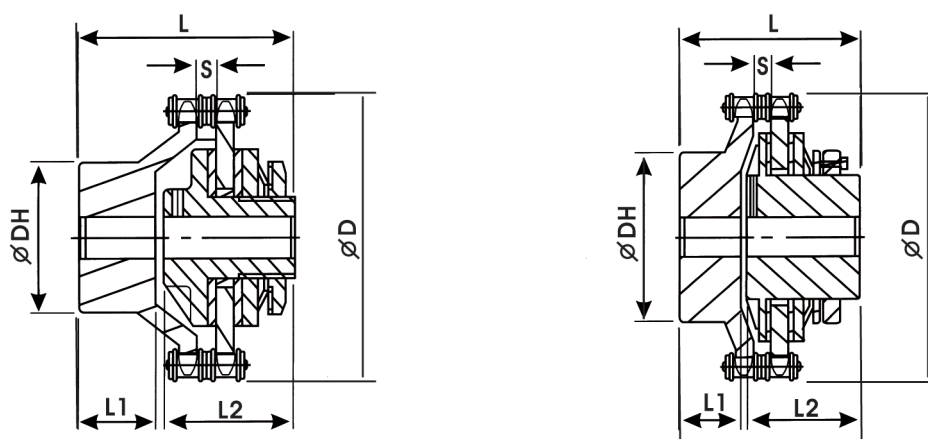
- ① 輪轂 / Hub
- ② 磨擦板 / Friction Disc.
- ③ 軸襯 / Bushing
- ④ 壓力板 / Pressure Disc.
- ⑤ 盤式彈簧 / Disc Spring
- ⑥ 導板 / Guideway
- ⑦ 調整螺母 / Adjusting Nut
- ⑧ 調整螺栓 / Adjust Bolt
- ⑨ 固定螺絲 / Fixing Screw
- ⑩ 鎖緊墊圈 / Lock Washer

◆尺寸 / Dimension

尺寸單位：mm

規格 No.	扭力範圍 Torque Range Kgf.m	標準 孔徑 Stock Bore mm	最大 孔徑 Max. Bore mm	軸襯 長度 Bus hing length	軸機外徑 Bushin g outside diameter	中心構件 孔徑 Central Mem ber Bore	D	DH	L	B	T	t	S 最大	A	C	調整 螺母 Adjust Nut	調整 螺栓 Adjust Bolt	固定 螺絲 Fixing Screw	重量 Weight (Kgf)
SS200-1	0.3~1	8	14	3.6	30 ^{-0.024}	30 ^{+0.3}	50	24	29	6.5	2.6	2.5	7	-	38	M24	-	-	0.2
SS200-2	0.7~2				0	0													
SS250-1	0.7~2.8	10	22	4.5	41 ^{-0.010}	41 ^{+0.05}	65	35	48	16	4.5	3.2	9	4	50	M35	-	M5	0.5
SS250-2	1.4~5.5				0	0													
SS350-1	2.0~7.6	17	25	6.5	49 ^{-0.025}	49 ^{+0.05}	89	42	62	19	4.5	3.2	16	6	63	M42	-	M6	1.2
SS350-2	3.5~15.2				0	0													
SS500-1	4.8~21.4	20	42	6.5	74 ^{-0.05}	74 ^{+0.05}	127	65	76	22	5.7	3.2	16	7	-	M65	M8	M8	3
SS500-2	9.0~42.9				0	0										3 psc			
SS700-1	11.8~58.1	30	64	9.5	105 ^{-0.075}	105 ^{+0.05}	178	95	98	24	7.7	3.2	29	8	-	M95	M10	M10	6.7
SS700-2	22.8~110.6				0	0										3 psc			

摩擦型扭力限制聯軸器 Friction Type Torque Limiter



SS200-C.SS250-C.SS350-C

SS500-C.SS700-C

◆尺寸表 / Specification

單位：mm

規格 No.	扭力範圍 Torque Range Kgf.m	最高轉數 Max. Rotational Frequency rpm	普通內徑/Stock Bore		最大內徑 Max. Inside Diameter		鏈輪 Sprocket	D	DH	L	L1	L2	s	重量 Weight (Kgf)
			聯軸器側 Coupling Side	扭力限制器側 Limiter Side	聯軸器側 Coupling Side	扭力限制器側 Limiter Side								
SS200-1C	0.3~1	1200	8	8	31	14	RS 40-16T	76	50	55	24	29	7.5	1.0
SS200-2C	0.7~2													
SS250-1C	0.7~2.8	1000	13	10	38	22	RS 40-22T	102	56	76	25	48	7.4	2.0
SS250-2C	1.4~5.5													
SS350-1C	2.0~7.6	800	13	17	45	25	RS 50-24T	137	72	103	37	62	9.7	5.2
SS350-2C	3.5~15.2													
SS500-1C	4.8~21.4	500	18	20	65	42	RS 60-28T	188	105	120	40	76	11.6	12.3
SS500-2C	9.0~42.9													
SS700-1C	11.8~58.1	400	23	30	90	64	RS 80-28T	251	150	168	66	98	15.3	31.0
SS700-2C	22.8~110.6													

◆鏈輪之配合參考表 / Applicable Sprockets

規格 No.	中心構件孔徑 Central Member Bore	最少鏈輪節距和齒數 / Min. Sprocket Pitch and Number of Teeth													
		3/8" -#35		1/2" -#40		5/8" -#50		3/4" -#60		1" -#80		1 1/4" -#100		1 1/2" -#120	
		最少鏈輪齒數 Min. Sprocket Teeth	軸襯長度 Bushing length (mm)	最少鏈輪齒數 Min. Sprocket Teeth	軸襯長度 Bushing length (mm)	最少鏈輪齒數 Min. Sprocket Teeth	軸襯長度 Bushing length (mm)	最少鏈輪齒數 Min. Sprocket Teeth	軸襯長度 Bushing length (mm)	最少鏈輪齒數 Min. Sprocket Teeth	軸襯長度 Bushing length (mm)	最少鏈輪齒數 Min. Sprocket Teeth	軸襯長度 Bushing length (mm)	最少鏈輪齒數 Min. Sprocket Teeth	軸襯長度 Bushing length (mm)
SS200	30 ^{+0.03} ₀	20	38	16	6										
SS250	41 ^{+0.05} ₀			20	4.5	17	6.5								
SS350	49 ^{+0.05} ₀			26	4.5	21	6.5	18	9.5	15	9.5				
SS500	74 ^{+0.05} ₀			35	4.5	29	6.5	25	9.5	19	9.5				
SS700	105 ^{+0.05} ₀			48	4.5	39	6.5	33	9.5	26	9.5	21	12.5	18	12.5

◆注意事項 / Note :

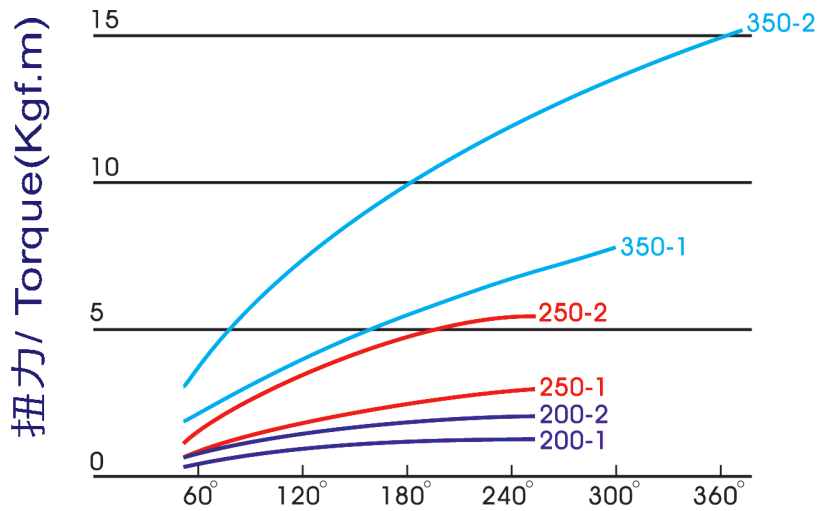
- 中心構件之磨擦面必須研磨加工以得額定之扭力，並成為平坦、平行，與內徑相垂直，不含任何灰塵，銹皮或油污為宜。
The friction surface of central member must be polished to gain the rated torque to provide flatness, parallel and perpendicularity to inside diameter; and to retain freed from dust, burr or oil.
- 內環之選擇不可大於中心構件的寬度，中心構件最大厚度見表中之S尺寸。
The inner ring is no greater than the width of central member. Please refer to the S dimension in the table to seek for the max. thickness of central part.

磨擦式扭力限制器

Friction Type of Torque Limiter

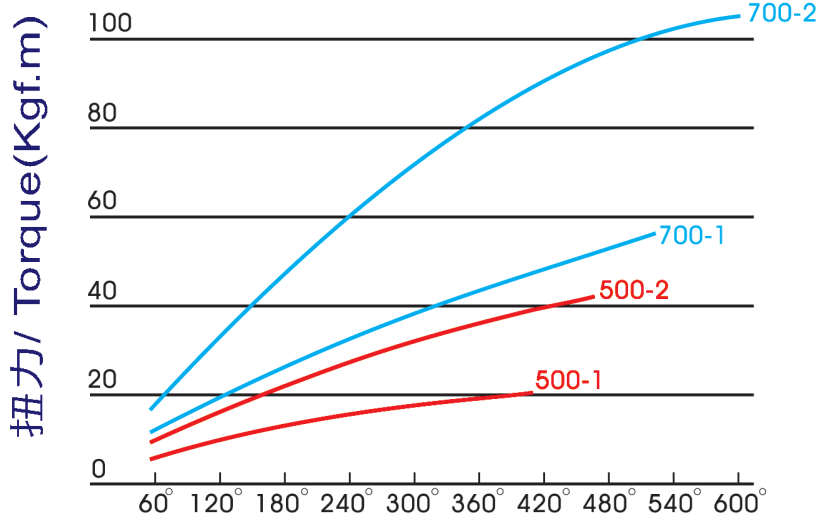
扭力值與鎖緊螺帽調整關係圖

Torque Value to Nut Packing Adjustment



SS200 - SS350 鎖緊螺帽調整角度

Nut Packing Adjustable Angle for SS200 - SS350



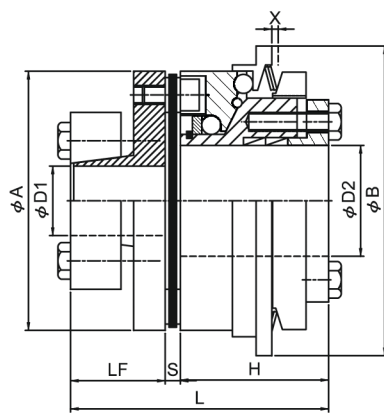
SS500 - SS700 鎖緊螺帽調整角度

Nut Packing Adjustable Angle for SS500 - SS700

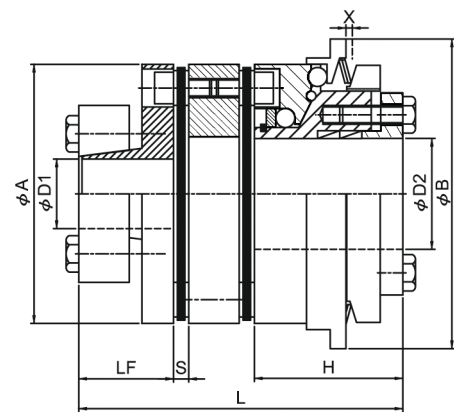
聯軸器型扭力限制器 Torque Limiter with Coupling



- 可取代聯軸器使用 / Substitute for Coupling
- 可精確的傳動扭力 / Precise Transmissible Torque
- 無背隙單點復歸 / Backlash-free, Regression-to-origin
- 具有偵測過載功能 / Overload Detectable
- 耐用免保養壽命長
Endurable, Maintenance-free and Infinite Life



SWT



SWLT

◆特性表 / Specification

單位/unit:mm

		扭力範圍 Torque Range (Kgtm)	A	B	扭力限制器側 Limiter Side D1	聯軸器側 Coupling Side D2	LF	S	H	L	X	最高轉速 Max. Rotational Frequency (rpm)	重量 kg
SWT-68	A	1~3	68	78	15~25	14~30	25	4.2	45	74.2	1	3000	1.3
	B	2~6											
SWT-82	A	2~7.5	82	98	20~35	16~35	30	4.8	47	81.8	1	2000	1.8
	B	4~15											
SWLT-68	A	1~3	68	78	15~25	14~30	25	4.2	45	94.4	1	3000	1.6
	B	2~6											
SWLT-82	A	2~7.5	82	98	20~35	16~35	30	4.8	47	102.6	1	2000	2.0
	B	4~15											

■ SWT/SWLT 選用方式 / Ordering Specification

SWT/SWLT- - -

外徑 D1 D2

Outer Diameter